

NOTICE OF FILING

NEW YORK CITY SCHOOL CONSTRUCTION AUTHORITY

Pursuant to §1731 of the New York City School Construction Authority Act, notice has been filed for the proposed site selection of Block 693, Lots 39 and 48, and any other property in the immediate vicinity which may be necessary for the proposed project, located in the Borough of Brooklyn, for the construction of a new, approximately 404-seat primary school facility in Community School District No. 15.

The proposed site contains approximately 19,600 square feet (0.44 acres) of lot area and is located on the corner of 5th Avenue and 36th Street, on the block bounded by 5th Avenue, 36th Street, 4th Avenue and 34th Street. The site is privately-owned and contains a 2 story building with a community outreach facility. The site plan and supplemental materials summarizing the proposed action are available at:

New York City School Construction Authority
30-30 Thomson Avenue
Long Island City, New York 11101

Attention: Ross J. Holden

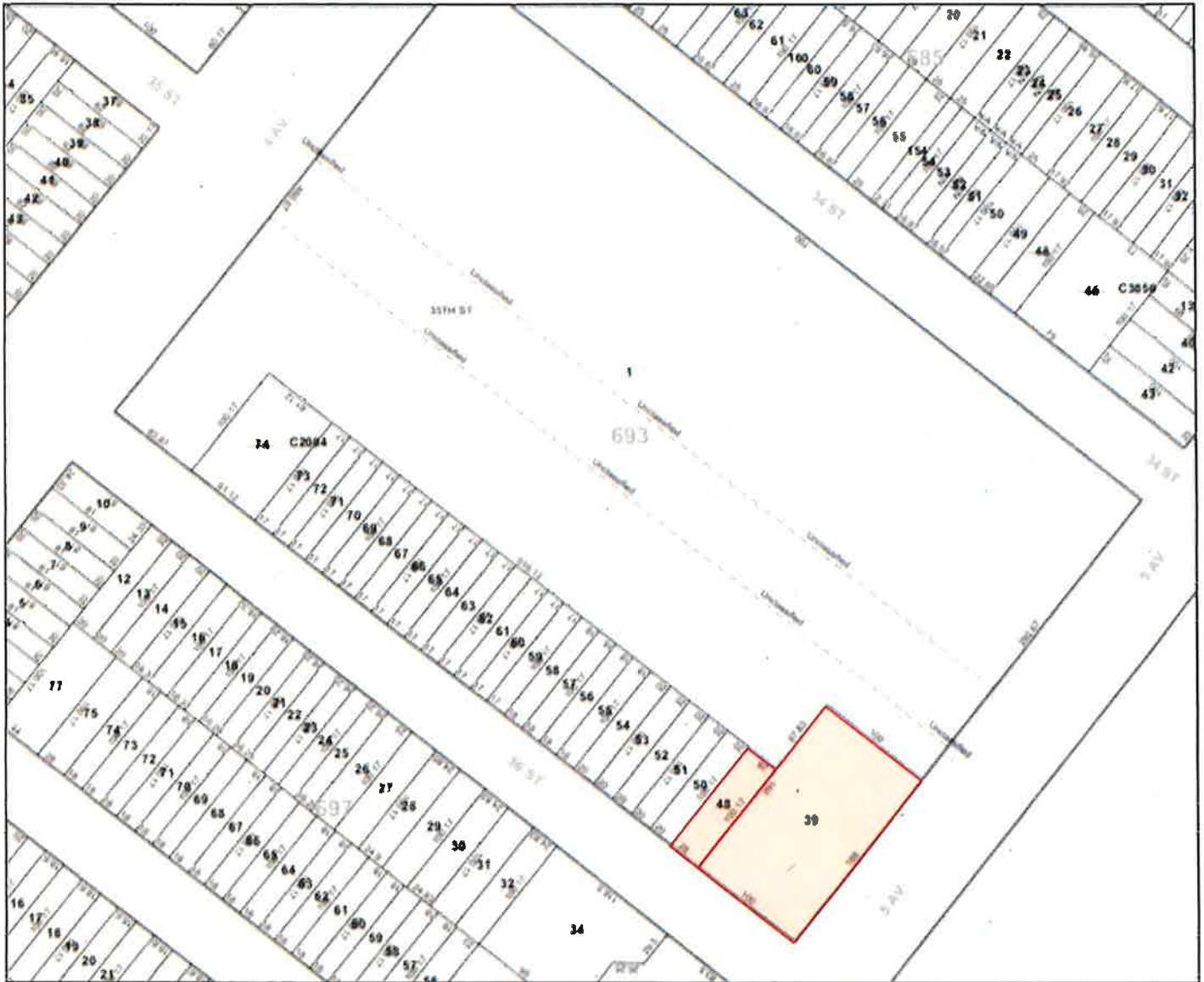
Comments on the proposed actions are to be submitted to the New York City School Construction Authority at the above address or by email to sites@nycsca.org and will be accepted until July 27, 2017.

For publication in the New York Post (5 Borough Edition) and the City Record on Monday, June 12, 2017



SITE PLAN FOR A NEW, APPROXIMATELY 404-SEAT PRIMARY SCHOOL FACILITY, BROOKLYN

Brooklyn Block 693, Lots 39 and 48
Community School District No. 15



PROJECTED STUDENT POPULATION FOR COMMUNITY SCHOOL DISTRICT NO. 15

Year	Projected Student Population (Pre-K to Grade 5)
2015-2016	21,088
2016-2017	21,288
2017-2018	21,242
2018-2019	21,058
2019-2020	21,045
2020-2021	21,086
2021-2022	21,159

Source: *Enrollment Projections 2016 to 2025, New York City Public Schools. Statistical Forecasting LLC, April 2017*

The School Construction Authority utilizes professional service from a well-established demographic consultant. Additionally, the SCA utilizes the data provided by the Department of City Planning, Department of Building and Department of Housing Preservation & Development to estimate the number of students that would be generated by projected housing development.

By 2021 (which is the year when student occupancy of the proposed school facility is anticipated to commence), the community school district is projected to have 24,486 primary school students enrolled in Pre-Kindergarten through fifth grade, taking into account both the demographic projection and estimated housing growth. This number suggests a potential increase of up to 4,680 students from the current enrollment of all existing Community District No.15 primary schools which would, in the future without the proposed school, be anticipated to experience a target utilization rate of 122%. Should the proposed primary school facility be constructed, the overall target utilization rate would be reduced to 119%.

PROJECTED STUDENT POPULATION FOR COMMUNITY SCHOOL DISTRICT NO.15 SCHOOLS IN BROOKLYN COMMUNITY DISTRICT NO. 7

Community District No. 7 contains thirteen (13) primary schools within Community School District No.15. In the 2015-16 school years, these schools served a total enrollment of 8,693 students. Assuming the projected enrollment changes referenced above are proportionally reflected in these schools, the projected utilization of these schools are expected to be consistent with the trend seen in the projected overall utilization for all primary schools in Community School District No.15 and that the proposed school facility would reduce the overutilization of the existing school facilities.

ALTERNATE SITES ANALYSES

New, Approximately 404-Seat Primary School Facility

836 5th Avenue - Block 693, Lots 39 & 48

Community School District No. 15, Brooklyn

The following locations were also considered as potential sites for additional primary and intermediate seats in Community School District No. 15. The Department of Education's Five-Year Capital Plan for Fiscal Years 2015-2019 (as adopted in June 2016) allocates funding for the creation of 3,840 additional PS/IS seats in Community School District No. 15.

1. **4302 4th Avenue and 364 43rd Street, Block 728, Lots 34 & 36:** This 12,500 sf site has been evaluated and it has been determined that this site can accommodate a small public school facility. The public review process for the selection of this site commenced on June 1, 2016. If statutory approvals are obtained for this project, it is anticipated that a 332-seat primary school would be constructed on this site, within a portion of the façade of the existing 3-story police station house and a new 5-story construction behind the footprint of the original structure.
2. **4525 8th Avenue, Block 751, Lot 1:** This 13,000 sf site is located on the northeast corner of 8th Avenue and 46th Street. The site has been evaluated and it has been determined that this site can accommodate a small public school facility. The public review process for the selection of this site commenced on January 12, 2017. If statutory approvals are obtained for this project, it is anticipated that a 328-seat primary school would be constructed on this site.
3. **250-266 46th Street, Block 754, Lots 27, 29, 30, 32 & 34:** This 15,000 (approximately) square foot site is located mid-block on the block bounded by 46th Street, 3rd Avenue, 47th Street and 4th Avenue. The site contains a warehouse building and vacant lots. Various studies are currently underway to determine if this site is appropriate and can accommodate a small public school facility.
4. **736 48th Street, Block 777, Lot 1 (portion):** The site consists of a parochial school that is closing at the end of this month. It is located on a block bounded by 48th Street, 7th Avenue, 49th Street and 8th Avenue. Various studies are currently underway to determine if this site is appropriate and can accommodate a small public school facility.
5. **4217-4223 New Utrecht Avenue/1039-1057 43rd Street, Block 5596, Lot 23:** This 20,100 (approximately) square foot site is located on the corner of

New Utrecht Avenue and 43rd Street on the block bounded by New Utrecht Avenue, 42nd Street, Ft. Hamilton Parkway and 43rd Street. The site contains a 2 story warehouse building. Various studies are currently underway to determine if this site is appropriate and can accommodate a small public school facility.