

NOTICE OF FILING

NEW YORK CITY SCHOOL CONSTRUCTION AUTHORITY

Pursuant to §1731 of the New York City School Construction Authority Act, notice has been filed for the proposed site selection of Block 751, Lot 1, and any other property in the immediate vicinity which may be necessary for the proposed project, located in the Borough of Brooklyn, for the construction of a new, approximately 300-seat primary school facility in Community School District No. 15.

The proposed site contains approximately 13,033 square feet (0.30 acres) of lot area and is located on the northeast corner of 8th Avenue and 46th Street, on the block bounded by 8th Avenue, 45th Street, 9th Avenue and 46th Street. The site is privately-owned and contains a former supermarket building. The site plan and supplemental materials summarizing the proposed action are available at:

New York City School Construction Authority
30-30 Thomson Avenue
Long Island City, New York 11101

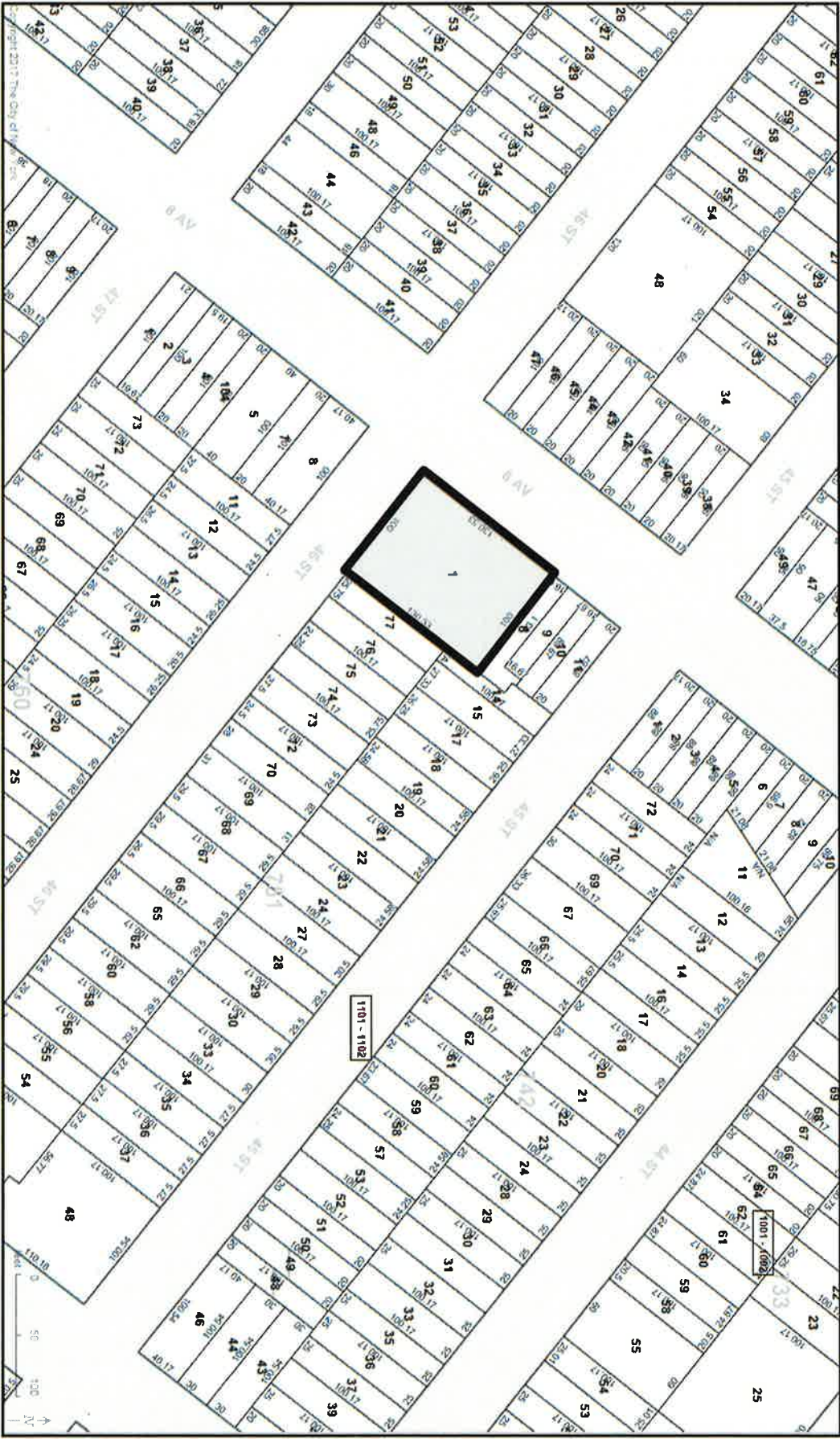
Attention: Ross J. Holden

Comments on the proposed actions are to be submitted to the New York City School Construction Authority at the above address or by email to sites@nycsca.org and will be accepted until February 26, 2017.

For publication in the New York Post (5 Borough Edition) and the City Record on Thursday, January 12, 2017



SITE PLAN FOR A NEW, APPROXIMATELY 300-SEAT PRIMARY SCHOOL FACILITY, BROOKLYN
Brooklyn Block 751, Lot 1
Community School District No. 15



ALTERNATE SITES ANALYSES

New, Approximately 300-Seat Primary School Facility

4525 8th Avenue - Block 751, Lot 1

Community School District No. 15, Brooklyn

The following locations were also considered as potential sites for additional primary and intermediate seats in Community School District No. 15. The Department of Education's Five-Year Capital Plan for Fiscal Years 2015-2019 (as adopted in June 2016) allocates funding for the creation of 3,840 additional PS/IS seats in Community School District No. 15.

- 1. 250-266 46th Street, Block 754, Lots 27, 29, 30, 32 & 34:** This 15,000 (approximately) square foot site is located mid-block on the block bounded by 46th Street, 3rd Avenue, 47th Street and 4th Avenue. The site contains a warehouse building and vacant lots. Various studies are currently underway to determine if this site is appropriate and can accommodate a small public school facility.
- 2. 291-301 24th Street, Block 649, Lots 48, 52 & 53:** This 12,000 (approximately) square foot site is located mid-block on a block bounded 4th Avenue, 23rd Street, 5th Avenue and 24th Street. The site contains warehouse buildings. Various studies are currently underway to determine if this site can accommodate a small public school facility.
- 3. 4302 4th Avenue and 364 43rd Street, Block 728, Lots 34 & 36:** This 12,500 sf site has been evaluated and it has been determined that this site can accommodate a small public school facility. The public review process for the selection of this site commenced on June 1, 2016. If statutory approvals are obtained for this project, a 300-seat primary school would be constructed on this site.
- 4. 836-841 5th Avenue, Block 693, Lots 39 & 48:** This 19,605 (approximately) square foot site is located on the northwest corner of 5th Avenue and 36th Street. The site contains a 2 story retail building and parking lot. Various studies are currently underway to determine if this site is appropriate and can accommodate a small public school facility.
- 5. 344-360 37th Street, Block 700, Lot 22:** This 21,035 (approximately) square foot site is located mid-block on the south side 37th Street, between 3rd and 4th Avenues. The site contains a one story industrial building and parking lot. Various studies are currently underway to determine if this site is appropriate and can accommodate a small public school facility.

PROJECTED STUDENT POPULATION FOR COMMUNITY SCHOOL DISTRICT NO. 15

Year	Projected Student Population (Pre-K to Grade 5)
2014-2015	20,727
2015-2016	21,057
2016-2017	21,418
2017-2018	21,557
2018-2019	21,539
2019-2020	21,671
2020-2021	21,778
2021-2022	21,841

Source: ** Enrollment Projections 2015 to 2024, New York City Public Schools. Statistical Forecasting LLC, May 2015

The School of Constructions Authority utilizes professional service from a well-established demographic consultant. Additionally, the SCA utilizes the data provided by the Department of City Planning, Department of Building and Department of Housing Preservation & Development to estimate the number of students that would be generated by projected housing development.

By 2021 (which is the year in which student occupancy of the proposed school facility is anticipated to commence), the community school district is projected to have 24,396 primary school students enrolled in Pre-Kindergarten through fifth grade, taking into account both the demographic projection and estimated housing growth. This number suggests a potential increase of up to 5,022 students from the current enrollment of all existing Community District No.15 primary schools and would, in the future without the proposed school, be anticipated to result in target utilization rate 153% of those schools. Should the proposed, approximately 322-seat primary school facility be constructed, the overall target utilization rate would be reduced to 150%.

**PROJECTED STUDENT POPULATION FOR COMMUNITY SCHOOL DISTRICT NO.15
SCHOOLS IN BROOKLYN COMMUNITY DISTRICT NO.12**

Community District No.12 contains three (3) primary schools within Community School District No.15. In the 2015-16 school years, these schools served a total enrollment of 2,295 students. Assuming the projected enrollment changes referenced above are proportionally reflected in these schools, the projected utilization of these schools are expected to be consistent with the trend seen in the projected overall utilization for all primary schools in Community School District No.15 and that the proposed school facility would reduce the overutilization of the existing school facilities.