

Washington Irving Campus Building Rehabilitation

Informational Meeting with NYC Council Member Rosie Mendez and the NYC SCA.



April 24, 2017

6:30 pm



Agenda

1. Scope of work
2. Project timeline
3. Questions and Answers

1. Scope of work

Original building, 1910

8 stories tall plus upper playground



1937 Addition

12 stories tall plus basement



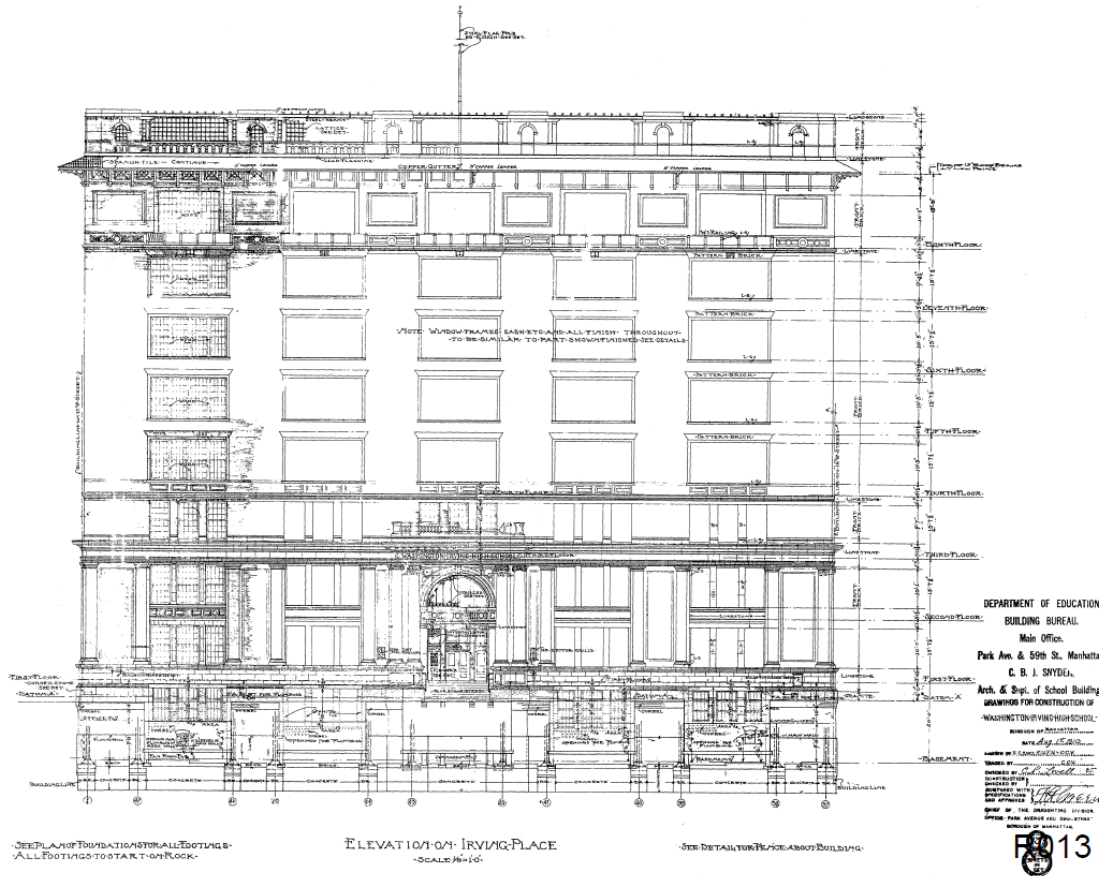






According to the New York State Office of Parks, Recreation and Historic Preservation:

“Washington Irving High School is considered eligible for the National Register of Historic Places under the Criteria C as an outstanding example of Neo-Classical style urban school design.”



Building's History

Washington Irving High School: an eligible NYC landmark

Original Building 1910 by C.B.J. Snyder

Addition Building 1937 by Walter C. Martin

Gross Building Area 370,000 sf.

THE WASHINGTON IRVING CAMPUS

- 1. The Gramercy Arts High School* 529 students
- 2. The High School of Language and Diplomacy* 399 students
- 3. The International High School at Union Square* 361 students
- 4. The Union Square Academy of Health Sciences* 404 students
- 5. The Academy for Software Engineering* 456 students
- 6. Washington Irving YABC* 229 students
- 7. Success Academy Union Square* 423 students

TOTAL OF STUDENTS 2801 students

Washington Irving High School Alumni



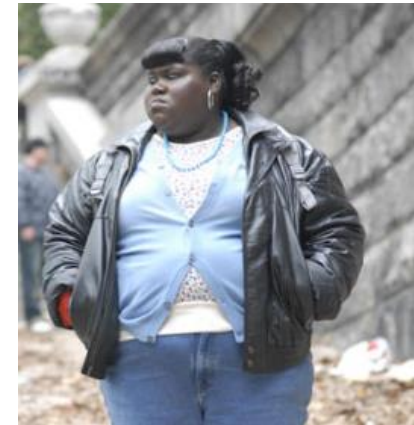
ANITA PAGE
*Actress Our
"Modern Maidens"*



CLAUDETTE COLBERT *Actress,
"Cleopatra"*



LEE KRASNER
Modernist Abstract Painter



GABOREY SADIBIE
Actress, "Precious"



SYLVIA ROBINSON
*Musician and "Mother of
Hip-hop"*



WHOOPI GOLDBERG EGOT
Actress, "Ghost"



VAST AIRE
Rapper



JOY BEHAR
*TV Personality, "The
View" co-host*

Existing conditions

*The Cycle 7 Local Law 11 Façade Inspection Report prepared by WASA Architects and dated 10/31/2012, classified the existing conditions of Washington Irving High School original and additional buildings as **UNSAFE** or **SWARMP** (Safe with a Repair and Maintenance Program).*



Photo 385: Cornice above the 2nd floor at the Northwest corner of Original Building

CRACK IN LIMESTONE



Photo 385: Cornice above the 2nd floor at the Northwest corner of Original Building

CRACK IN LIMESTONE



Photo 385: Cornice above the 2nd floor at the Northwest corner of Original Building

CRACK IN LIMESTONE



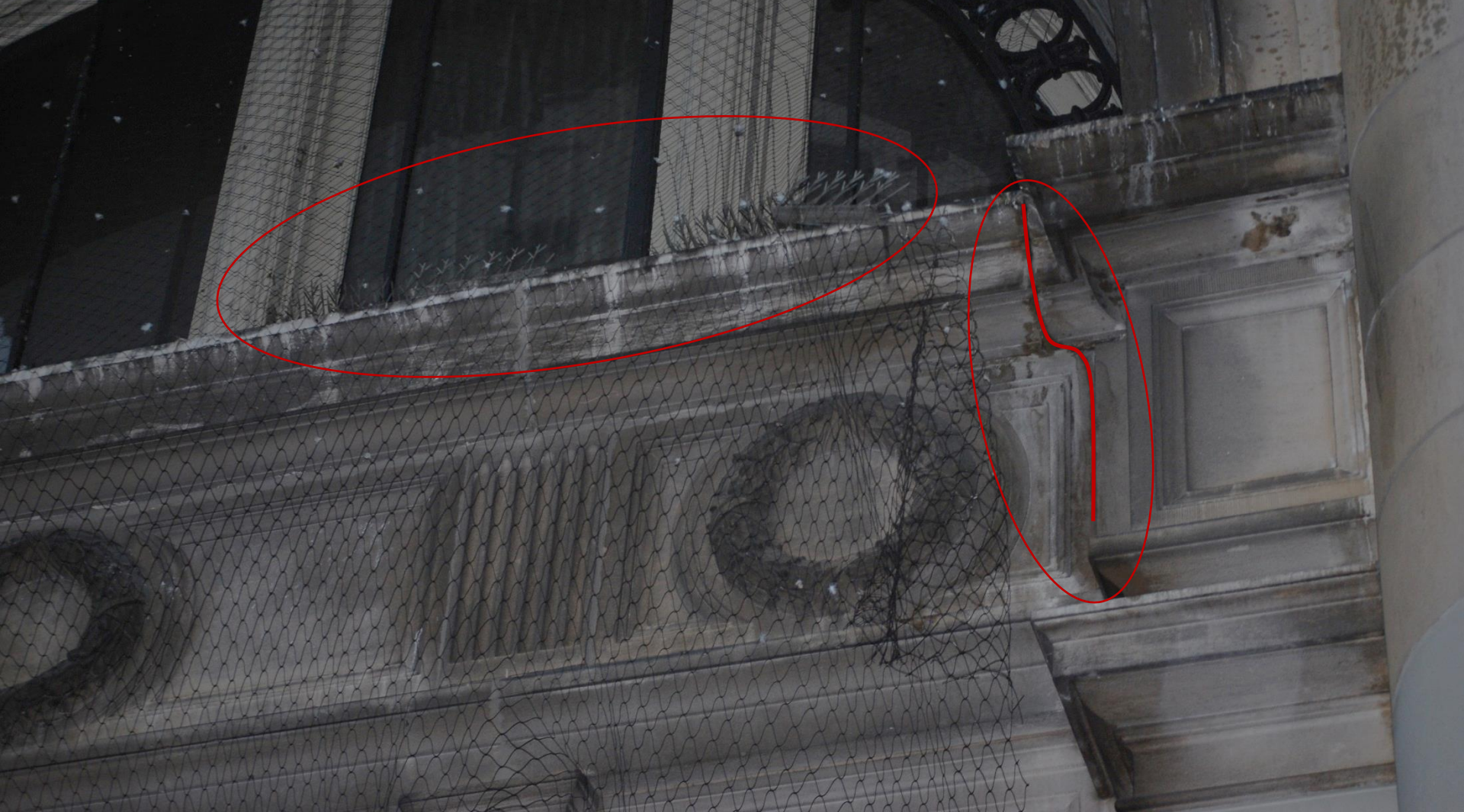
Irving Place entry

LOOSE METAL BIRD CONTROL SPIKES AND CRACK IN LIMESTONE



Irving Place entry

LOOSE METAL BIRD CONTROL SPIKES AND CRACK IN LIMESTONE



Irving Place entry

LOOSE METAL BIRD CONTROL SPIKES AND CRACK IN LIMESTONE



Netting at the northwest corner of the cornice and Sidewalk Sheds surrounding the facades

ADOPTED MEASURES IN RESPONSE TO THE UNSAFE CONDITION REPORTED

Findings

Investigation Methodology

1. Research of original documents of Washington Irving High School Building;
2. Observation and mapping of damage at the exterior and interior of the building;
3. Testing:
 - a) Roof scanning;
 - b) Infrared Thermal Imaging;
 - c) Rilem testing (Procedure for measuring the water absorption under low pressure);
 - d) Spray testing;
 - e) Inspection for lead based paints (through X-Ray Florescence analysis);
4. Exterior Exploratory Probe at the Bulkhead;
5. Hanging Scaffold Inspections at the North, West and South elevations of the 1910 building.



1910 Building Roof Plan, indicating areas of thermal anomalies

Area B – (Interior Parapet Masonry)

← Volume of Water absorbed (ml) →

Material Tested	5min	10min	20min	30min
Surface of Brick	2.0	3.5	4.0	4.0
Surface of Brick	1.5	2.5	4.0	4.5
Mortar Joint	2.0	3.5	EMPTY	-
Mortar Joint	0.0	0.0	1.0	1.0

Area B – RILEM test results indicate a gradual absorption rate through the brickwork and variable (sometimes reduced) absorption rate through mortar joints

Area B – (Exterior Parapet Masonry)

← Volume of Water absorbed (ml) →

Material Tested	5min	10min	20min	30min
Surface of Brick	0.0	1.5	1.5	3.0
Surface of Brick	0.5	1.0	2.5	3.5
Mortar Joint	1.0	2.5	4.0	EMPTY
Mortar Joint	1.5	2.0	2.5	2.5

Area B – RILEM test results indicate limited absorption through the brickwork and increased absorption through the mortar joints



Example of Rilem test in progress

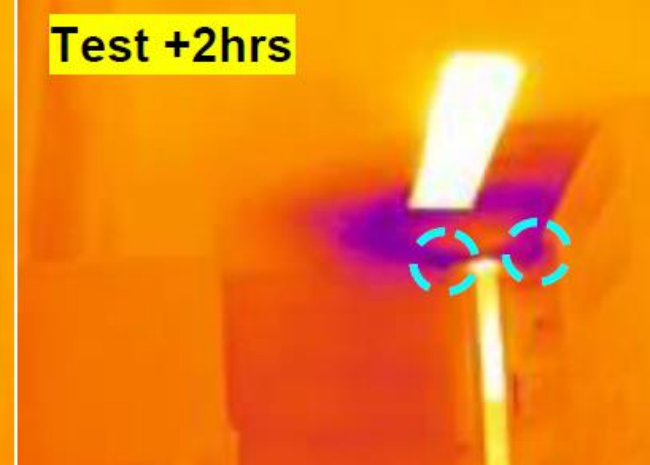
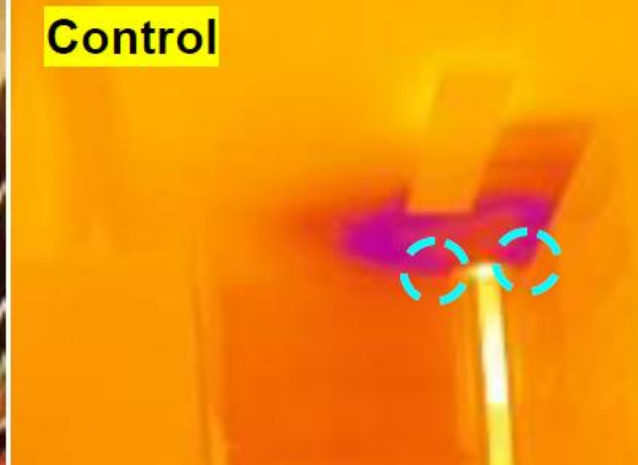
Rilem tests results in WIHS

RILEM TESTING

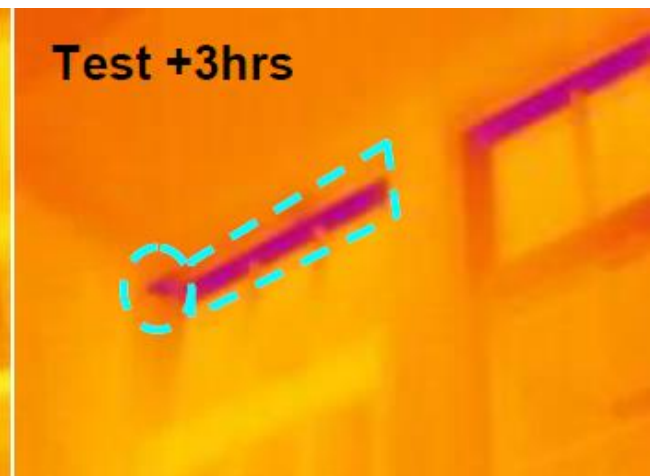
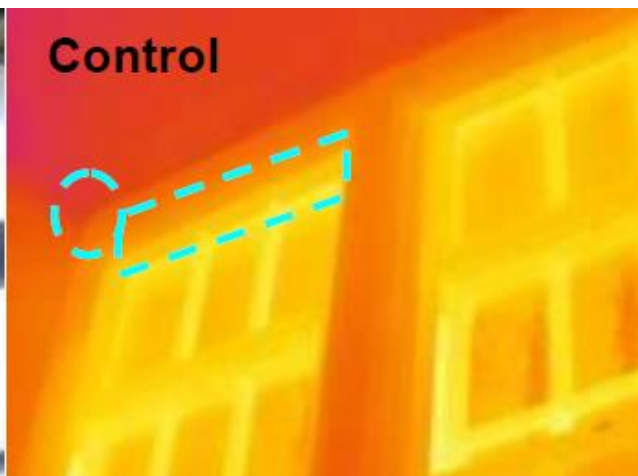
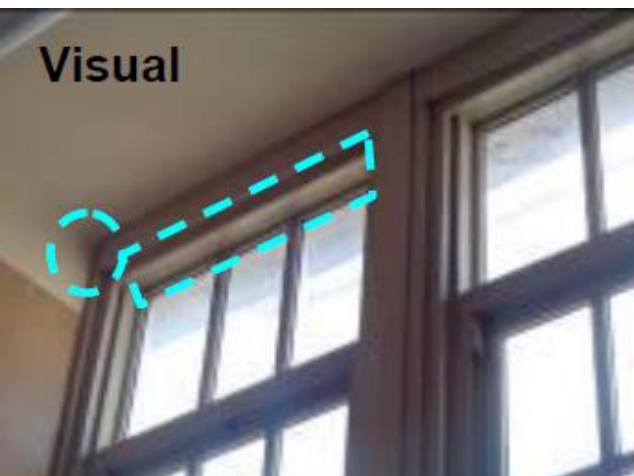


Standard spray testing equipment

SPAY TESTING



Storage Room 811, West Elevation



Gymnasium office, North Elevation

THERMAL IMAGING



EXTERIOR EXPLORATORY PROBE AT THE BULKHEAD



Drop location 1 – West elevation

HANGING SCAFFOLD INSPECTION

*In addition to the conditions determined in the Cycle 7 LL11 Report, the investigation made in 2013 by Nelligan White Architects found that the main reason for the present damages in Washington Irving High School Building are **continual water infiltration and thermal expansion and contraction over time.***

Existing Condition Drawings: Damage Mapping



NORTH ELEVATION
E17TH ST



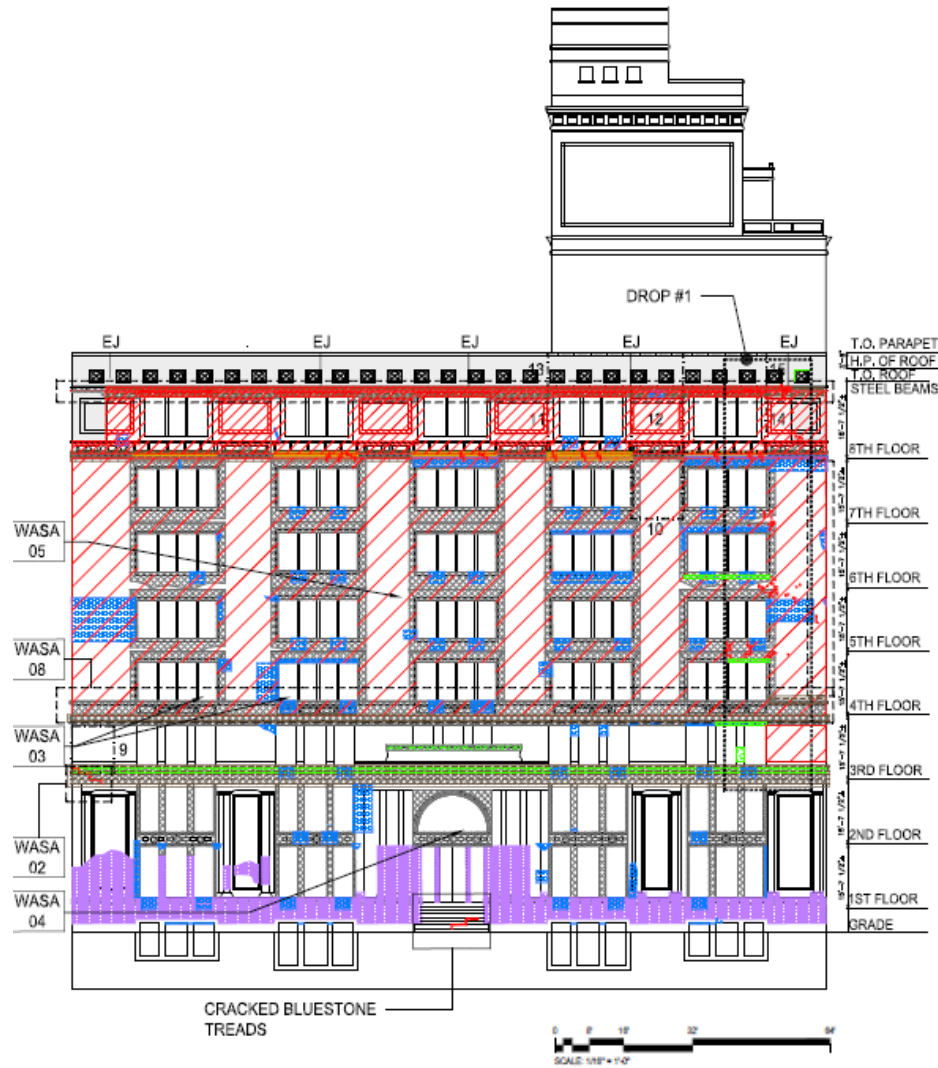
Photo 365: Original Building, North facade

WORN, STAINED LIMESTONE – ORGANIC MATERIAL GROWTH



Original Building North facade

CORRODING WINDOW LINTELS



- BRICK SPALLING 10 - 25%
- BRICK SPALLING 25 - 50%
- BRICK SPALLING > 50%
- MASONRY PROBE LOCATION
- DROP SCAFFOLD LOCATION
- SPRAY TEST LOCATION
- STAINED MASONRY
- LIMESTONE DAMAGE
- ORGANIC GROWTH
- RUST- STAINED MASONRY
- DAMAGE TO INTERIOR PLASTER AND/OR PAINT AT INTERIOR
- INTERIOR MASONRY CRACK
- LARGE EXTERIOR MASONRY CRACK
- FIELD OF MISSING MORTAR
- WORN/ WEATHERED MASONRY
- DAMAGE AT LINTEL/SILL
- EFFLORESCENCE AT MASONRY
- AREAS OF PREVIOUS BRICK REPAIRS
- PAINT OVER MASONRY

**WEST ELEVATION
IRVING PLACE**



Photo 355: Original Building West façade, 1st floor

EXTENSIVE STAINING AT LIMESTONE BASE



Photo 343: Original Building West façade

CHIPPED, CRACKED LIMESTONE



Photo 354: Original Building West façade, first floor

CHIPPED, CRACKED LIMESTONE



Original Building West façade, 5th floor

MASONRY CRACKS



Original Building West façade, 5th floor

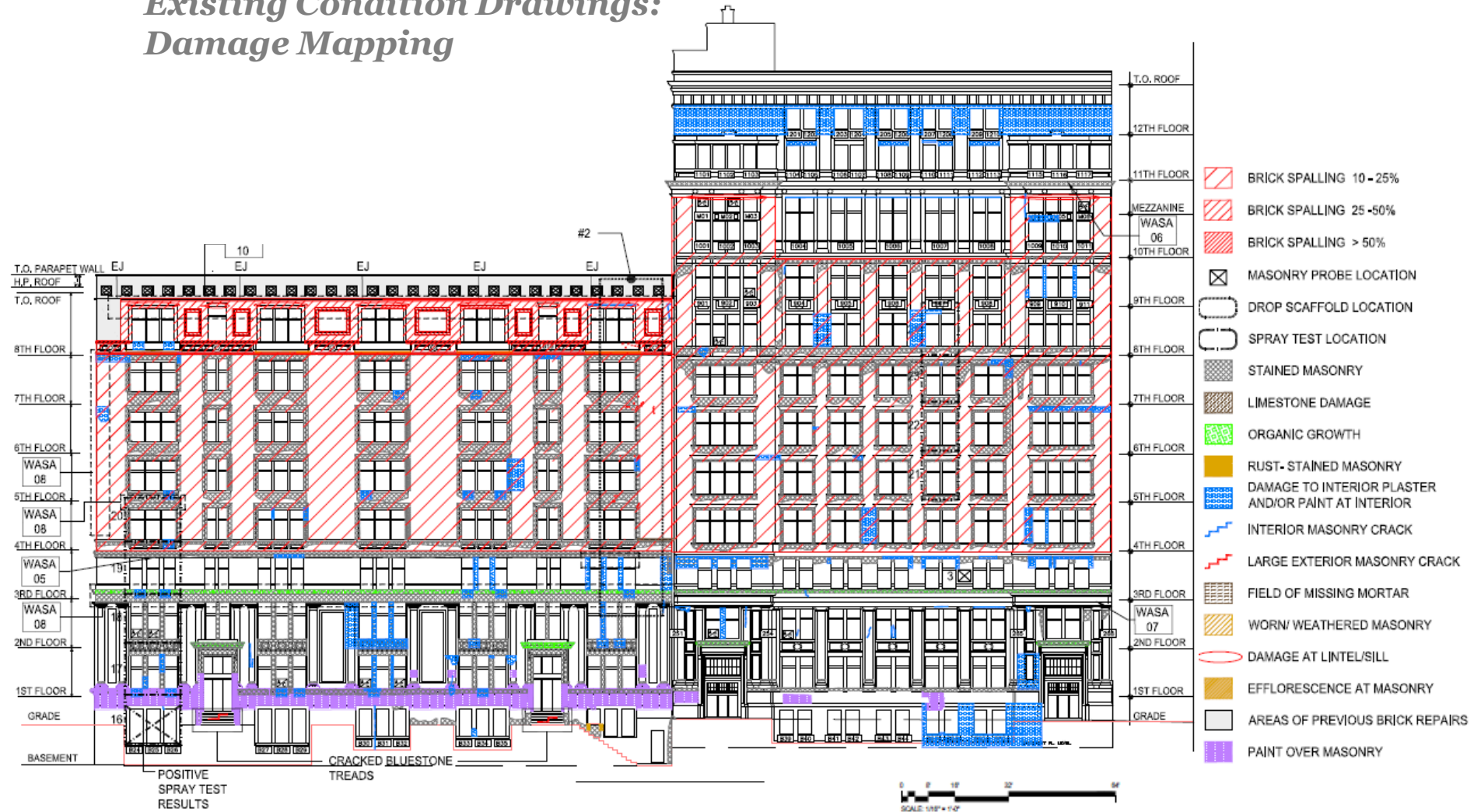
MASONRY CRACKS



West Elevation, Irving Place

RUSTED GUARDRAIL

Existing Condition Drawings: Damage Mapping



SOUTH ELEVATION



Drop Location # 1 – West Elevation; fourth floor



Drop Location # 2 – South Elevation; eighth floor

DETERIORATED MORTAR JOINTS AND BRICK SPALLING



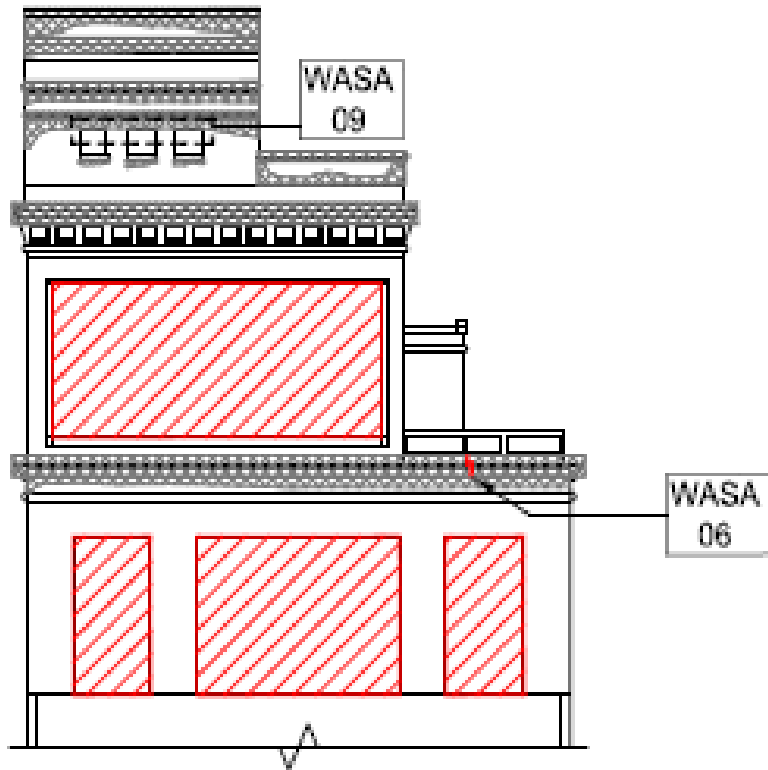
Photo 337: Original Building, Southwest Corner

EXTENSIVE CRACKS

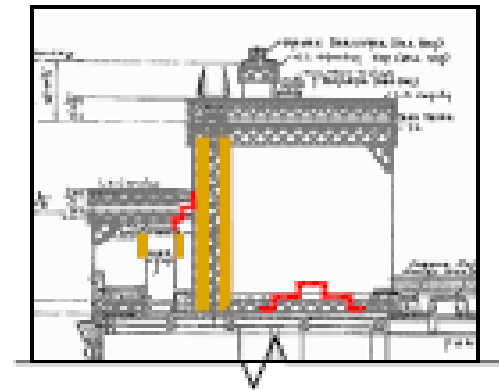


Photo 325: Original Building South facade

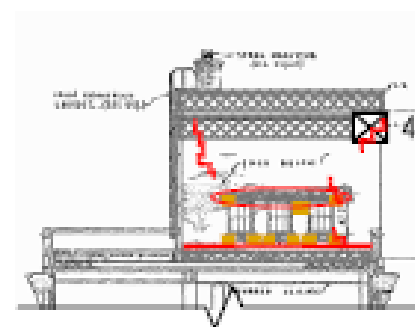
CHIPPED, CRACKED BLUESTONE AT ENTRY STEPS



ADDITION WEST ELEVATION



TANK ROOM SOUTH ELEVATION



TANK ROOM EAST ELEVATION

- BRICK SPALLING 10 - 25%
- BRICK SPALLING 25 -50%
- BRICK SPALLING > 50%
- MASONRY PROBE LOCATION
- DROP SCAFFOLD LOCATION
- SPRAY TEST LOCATION
- STAINED MASONRY
- LIMESTONE DAMAGE
- ORGANIC GROWTH
- RUST- STAINED MASONRY
- DAMAGE TO INTERIOR PLASTER AND/OR PAINT AT INTERIOR
- INTERIOR MASONRY CRACK
- LARGE EXTERIOR MASONRY CRACK
- FIELD OF MISSING MORTAR
- WORN/ WEATHERED MASONRY
- DAMAGE AT LINTEL/SILL
- EFFLORESCENCE AT MASONRY
- AREAS OF PREVIOUS BRICK REPAIRS
- PAINT OVER MASONRY



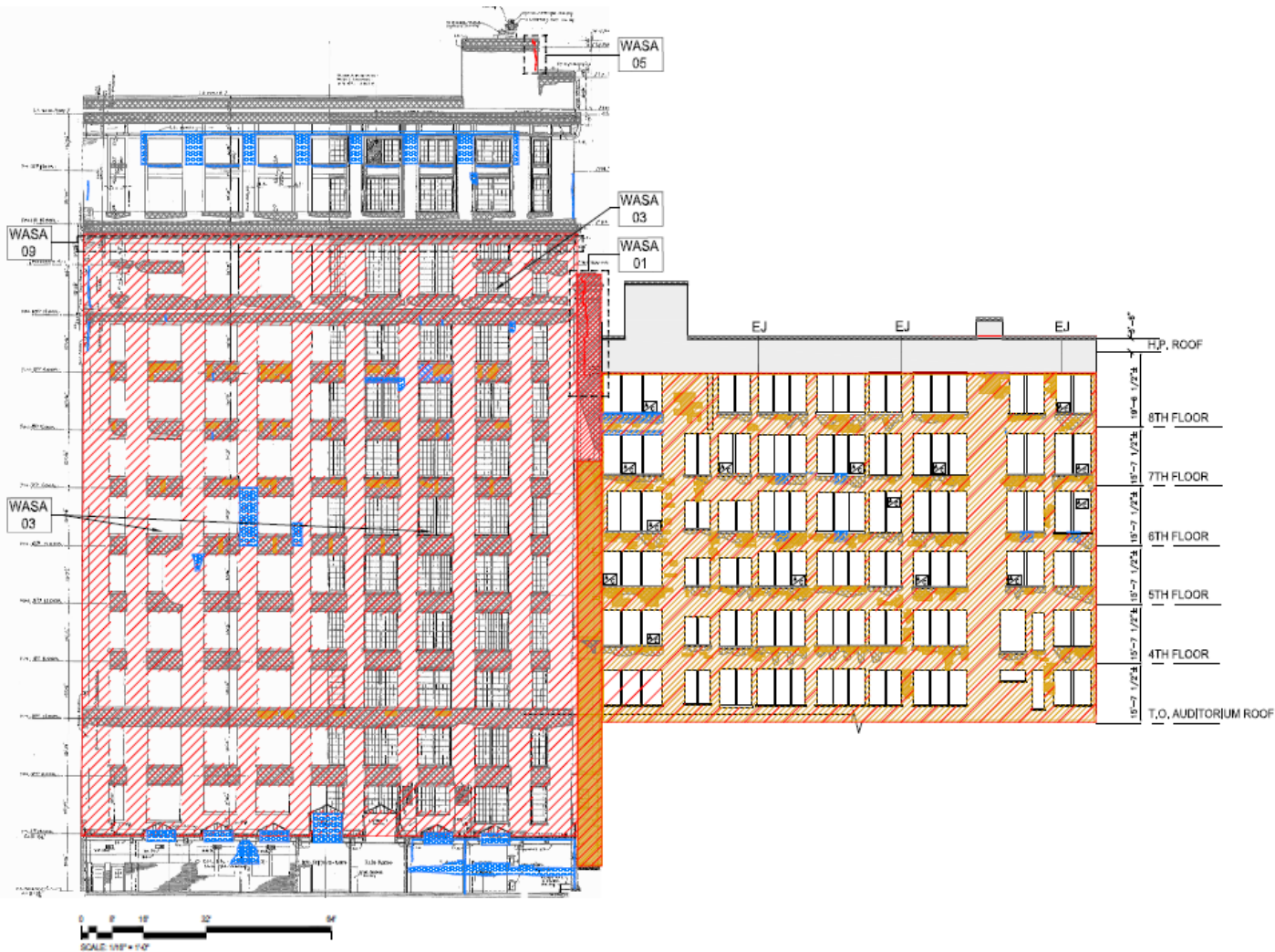
Photo 312: Additional Buildings Roof, looking south

MISSING MORTAR AND CRACKING



Photo 386: Additional Building Bulkhead, northeast corner

CRACK AT BRICK, MORTAR JOINTS AND LIMESTONE



- BRICK SPALLING 10 - 25%
- BRICK SPALLING 25 - 50%
- BRICK SPALLING > 50%
- MASONRY PROBE LOCATION
- DROP SCAFFOLD LOCATION
- SPRAY TEST LOCATION
- STAINED MASONRY
- LIMESTONE DAMAGE
- ORGANIC GROWTH
- RUST- STAINED MASONRY
- DAMAGE TO INTERIOR PLASTER AND/OR PAINT AT INTERIOR
- INTERIOR MASONRY CRACK
- LARGE EXTERIOR MASONRY CRACK
- FIELD OF MISSING MORTAR
- WORN/ WEATHERED MASONRY
- DAMAGE AT LINTEL/SILL
- EFFLORESCENCE AT MASONRY
- AREAS OF PREVIOUS BRICK REPAIRS
- PAINT OVER MASONRY

SOUTH COURT ELEVATION

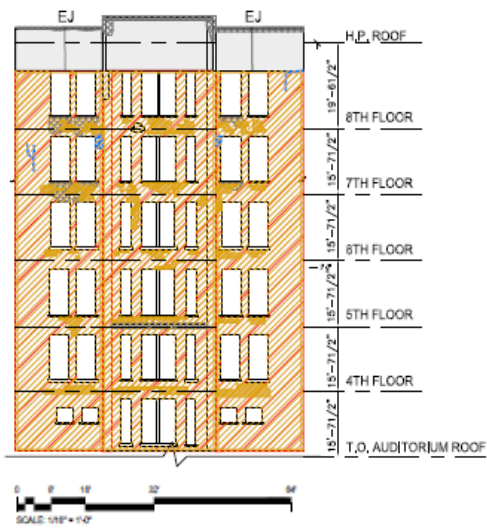


Original and Additional Building, South Court Facade



Additional Building, South Court Facade

BADLY WORN, STAINED AND EFFLORESCING MASONRY



WEST COURT ELEVATION



NORTH COURT ELEVATION

-  BRICK SPALLING 10 - 25%
-  BRICK SPALLING 25 -50%
-  BRICK SPALLING > 50%
-  MASONRY PROBE LOCATION
-  DROP SCAFFOLD LOCATION
-  SPRAY TEST LOCATION
-  STAINED MASONRY
-  LIMESTONE DAMAGE
-  ORGANIC GROWTH
-  RUST- STAINED MASONRY
-  DAMAGE TO INTERIOR PLASTER AND/OR PAINT AT INTERIOR
-  INTERIOR MASONRY CRACK
-  LARGE EXTERIOR MASONRY CRACK
-  FIELD OF MISSING MORTAR
-  WORN/ WEATHERED MASONRY
-  DAMAGE AT LINTEL/SILL
-  EFFLORESCENCE AT MASONRY
-  AREAS OF PREVIOUS BRICK REPAIRS
-  PAINT OVER MASONRY



Photo 377: Original Building, North Court Elevation

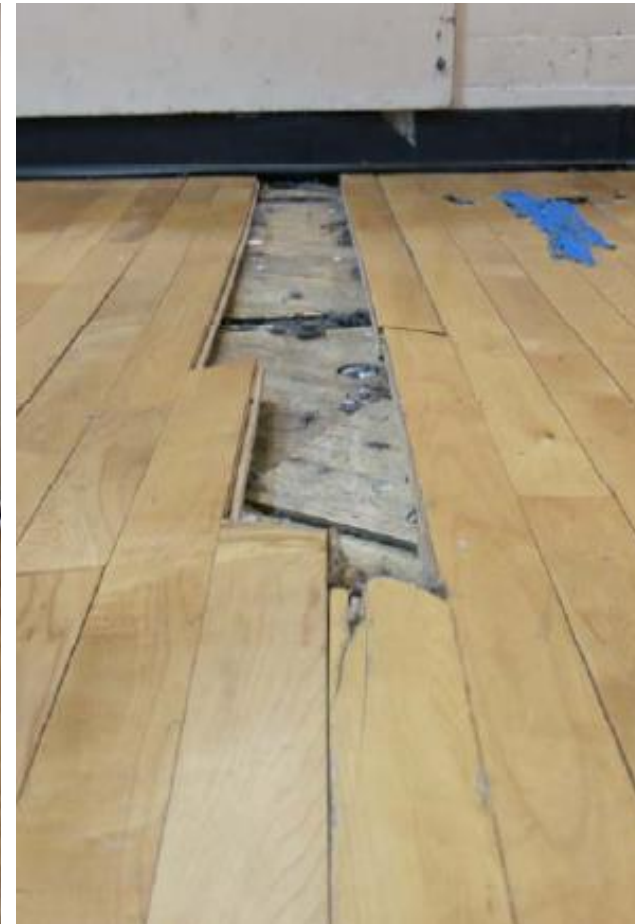
WORN MASONRY



Photo 70: Interior stair

INTERIORS

CRACKED STONE AT ENTRY STEPS



Gymnasium southwest corner

DAMAGED FLOOR AT GYMNASIUM



Photo 247: Room 811

WATER DAMAGE AT CEILING



Room 1147

STAINING ON WALLS, AT CEILING AND PIPING



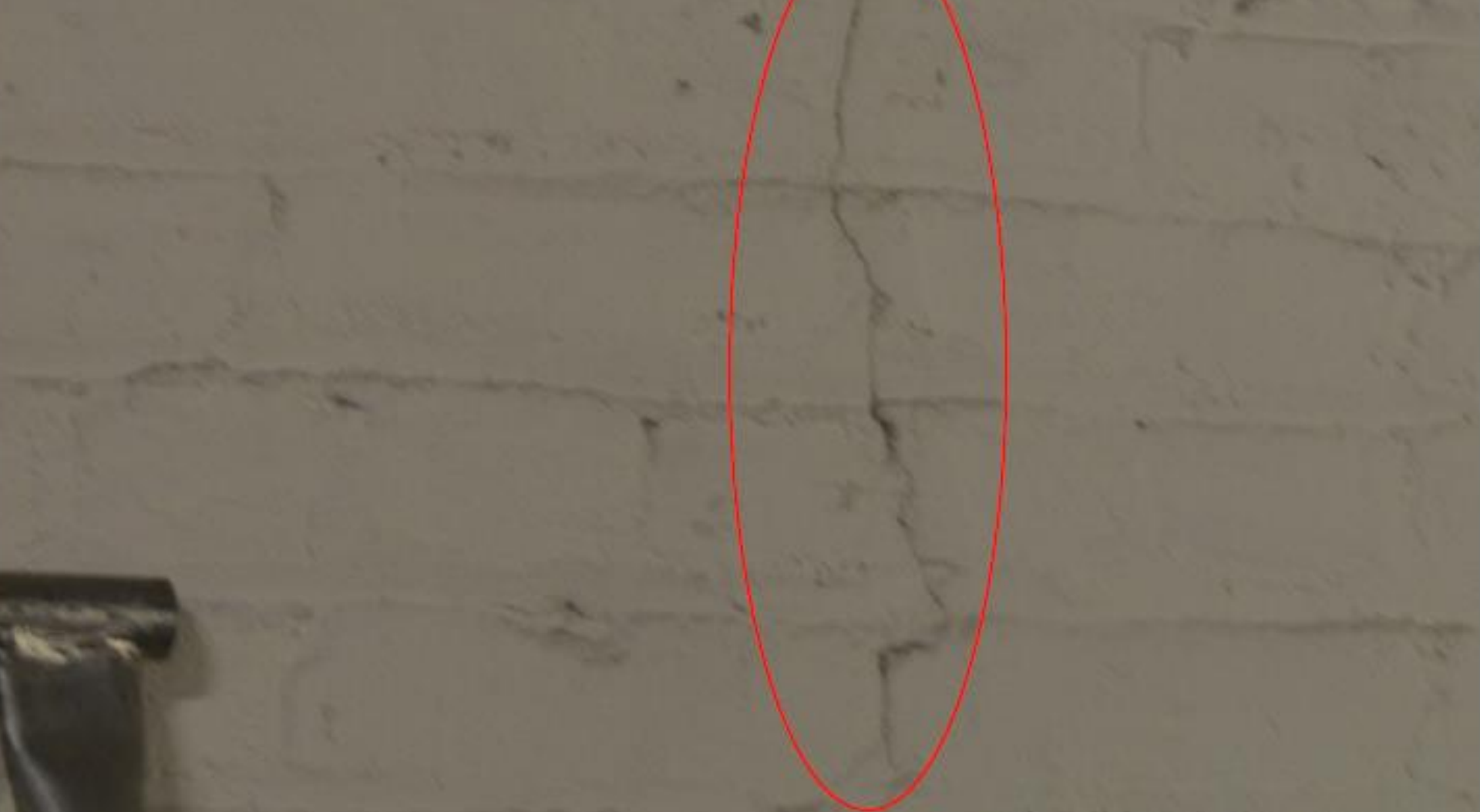
Room 746

CRACKS AT PLASTER'S IN-CASE STEEL BEAMS



Boiler Pit

WATER PONDING AND CRACK AT BRICK'S IN-CASE STEEL COLUMN



Boiler Room

CRACK AT INTERIOR BRICK MASONRY



Library

WATER DAMAGE AT INTERIOR PLASTER

Scope of Work

Scope Drawings: Recommended work



NORTH ELEVATION – E 17TH ST

Scope Drawings: Recommended work

REMOVE PARAPET AND
RECONSTRUCTION OF ITS
ORIGINAL DESIGN



NORTH ELEVATION – E 17TH ST

Scope Drawings: Recommended work

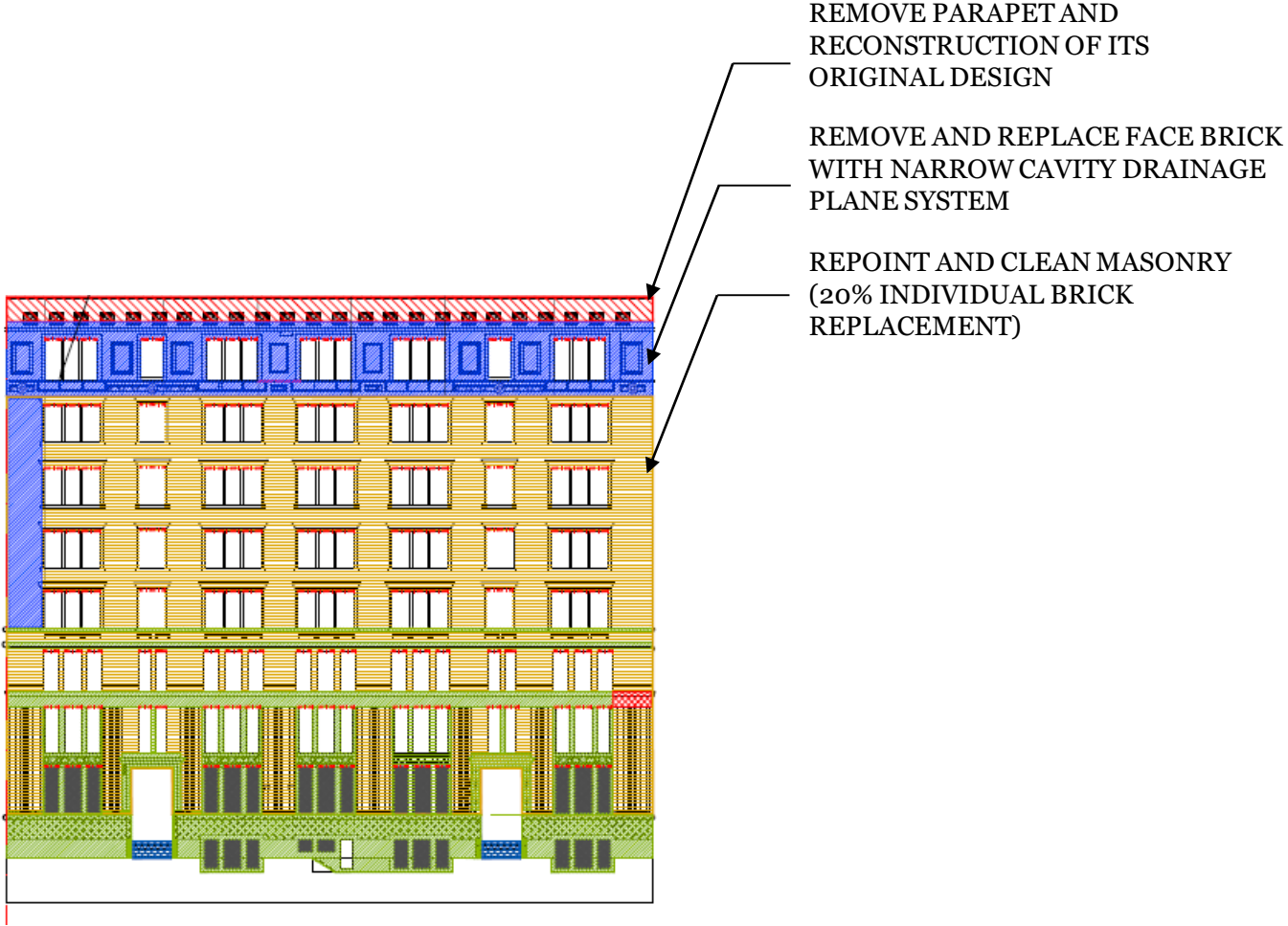
REMOVE PARAPET AND
RECONSTRUCTION OF ITS
ORIGINAL DESIGN

REMOVE AND REPLACE FACE BRICK
WITH NARROW CAVITY DRAINAGE
PLANE SYSTEM



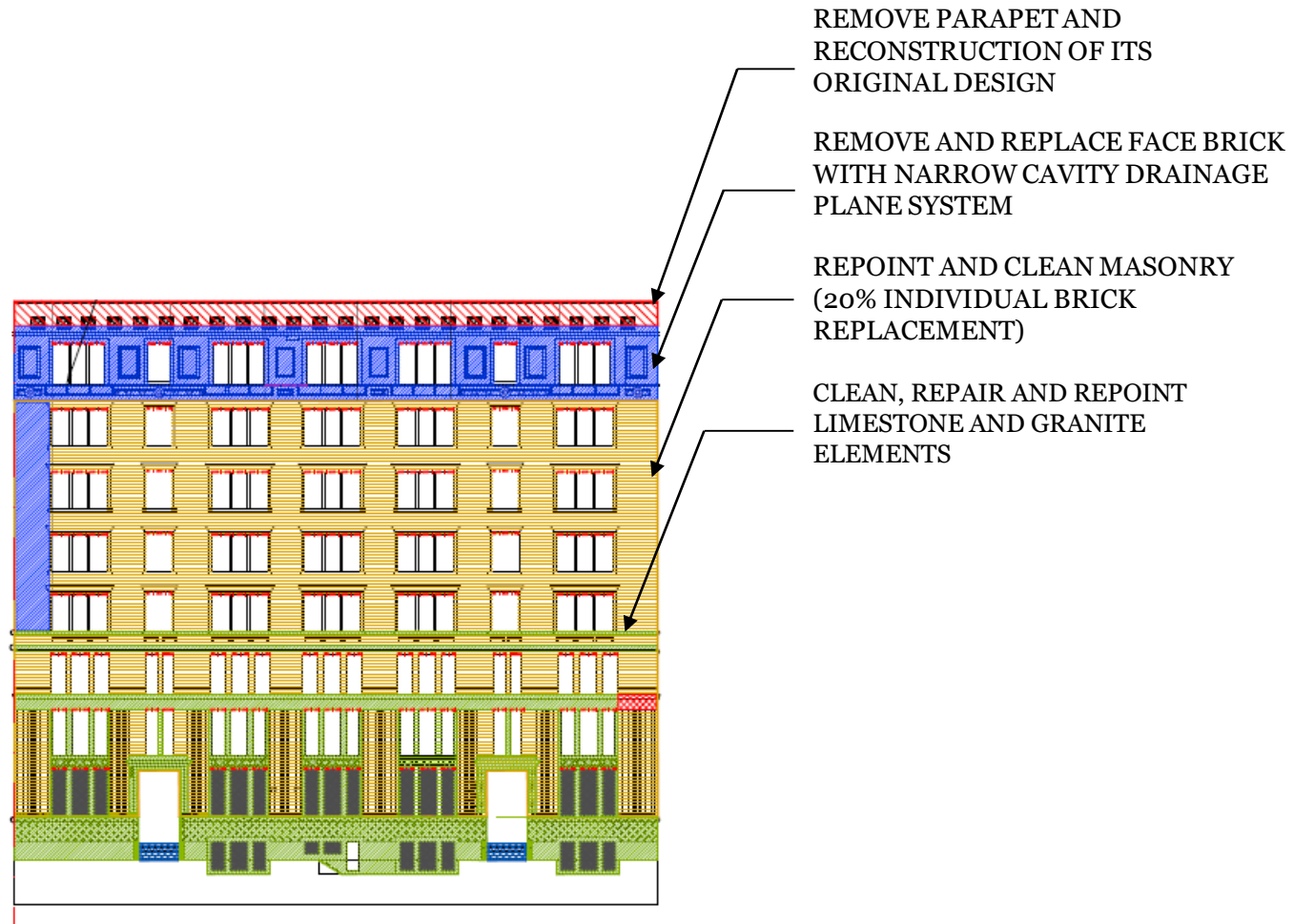
NORTH ELEVATION – E 17TH ST

Scope Drawings: Recommended work



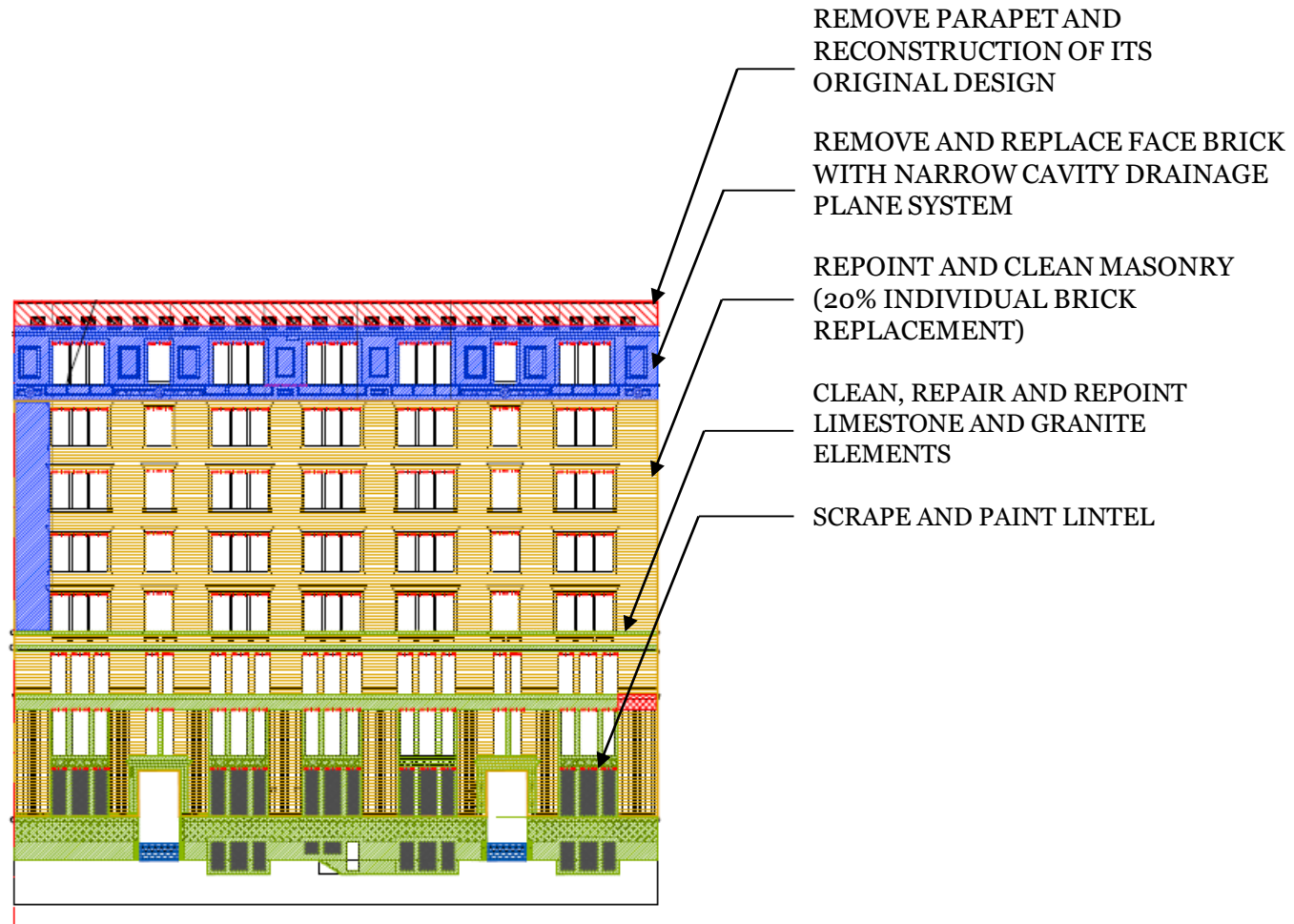
NORTH ELEVATION – E 17TH ST

Scope Drawings: Recommended work



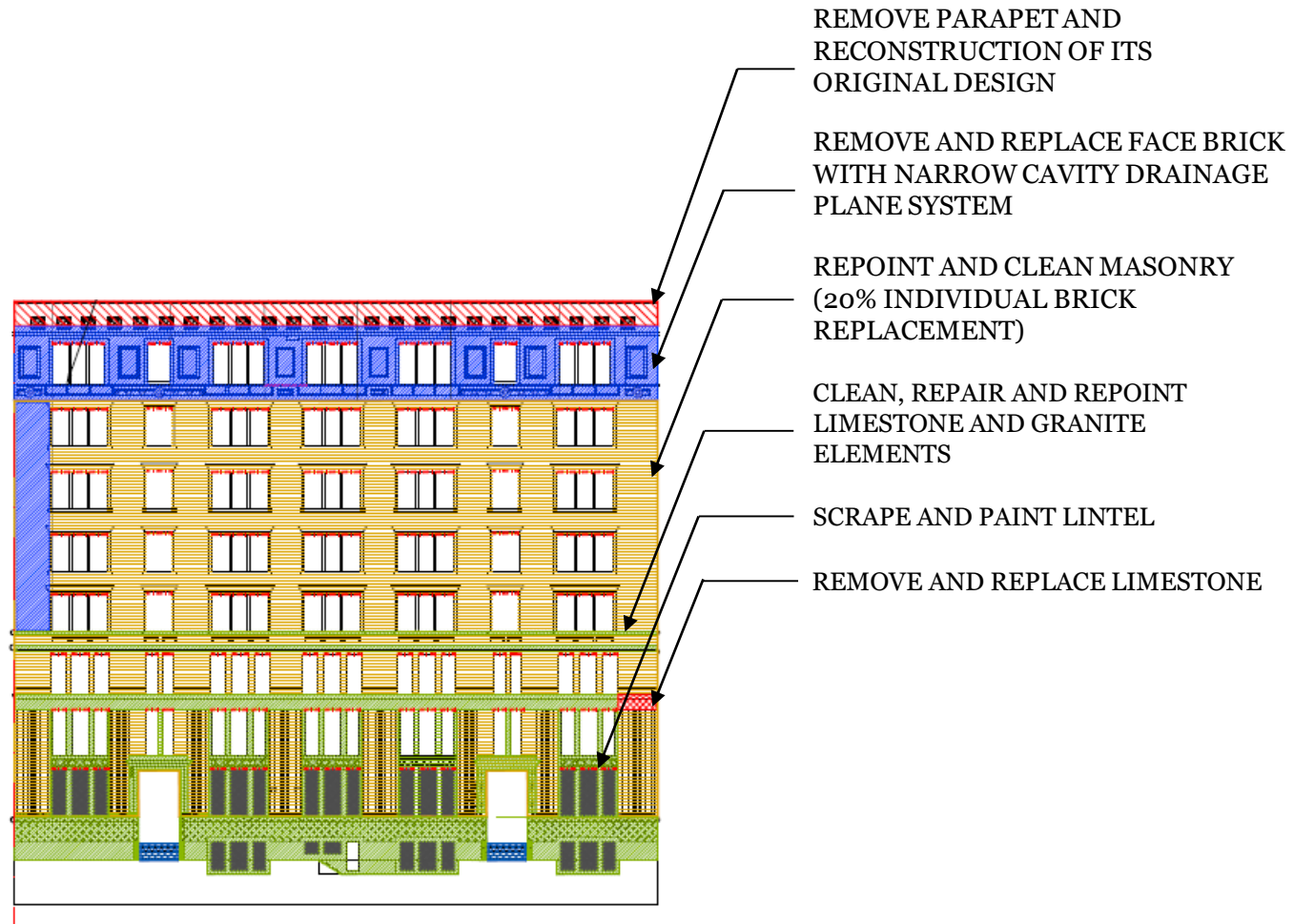
NORTH ELEVATION – E 17TH ST

Scope Drawings: Recommended work



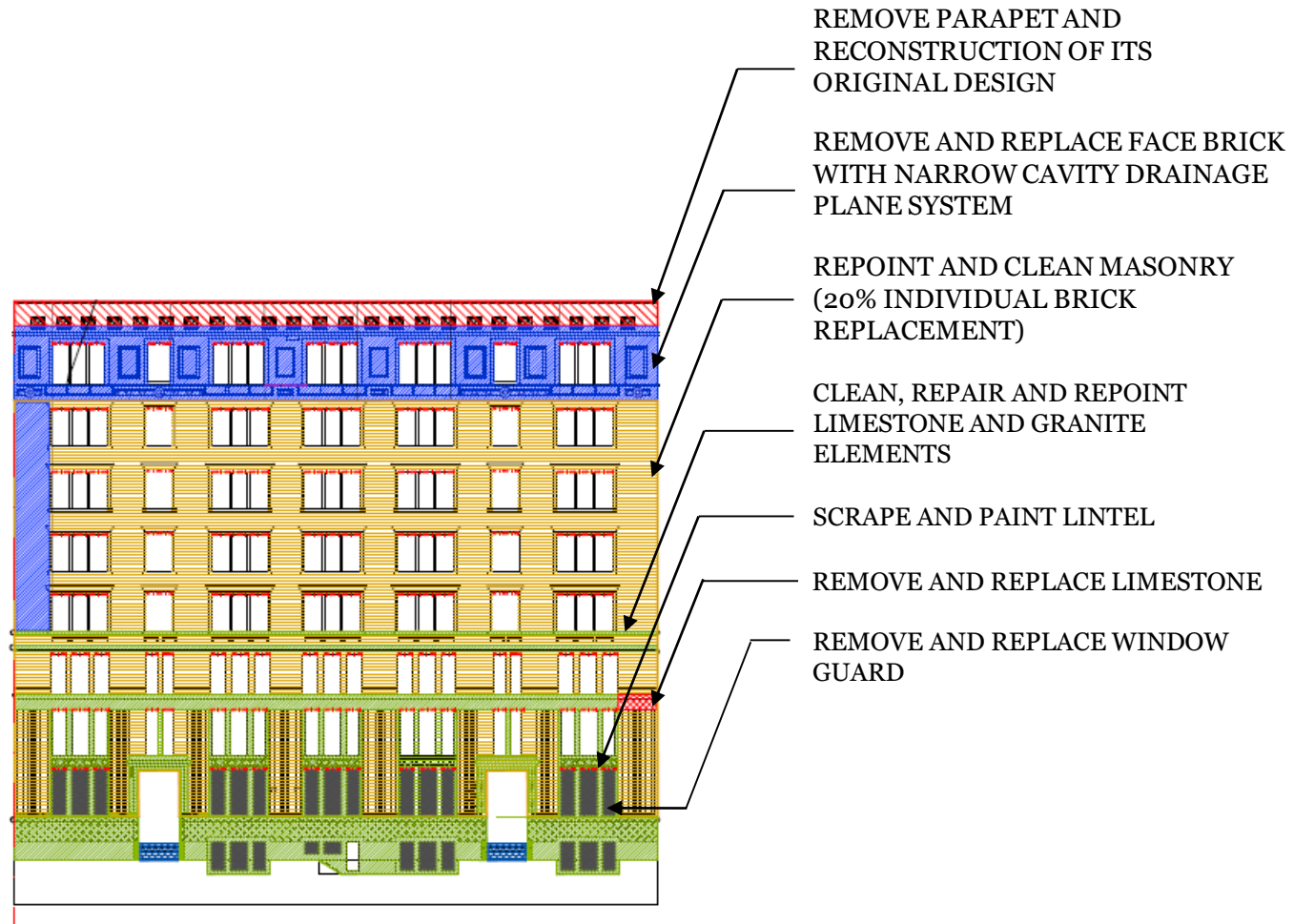
NORTH ELEVATION – E 17TH ST

Scope Drawings: Recommended work



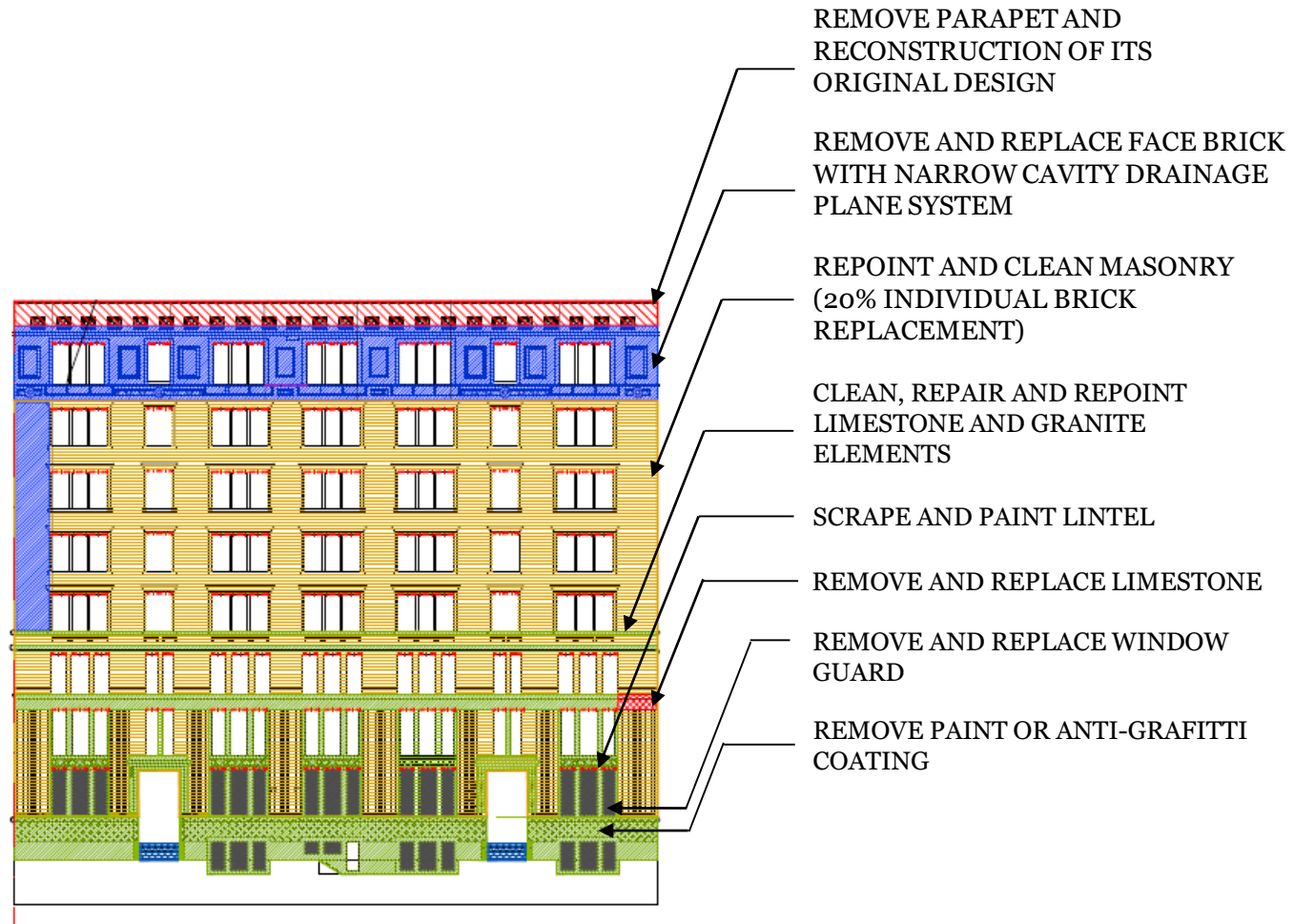
NORTH ELEVATION – E 17TH ST

Scope Drawings: Recommended work



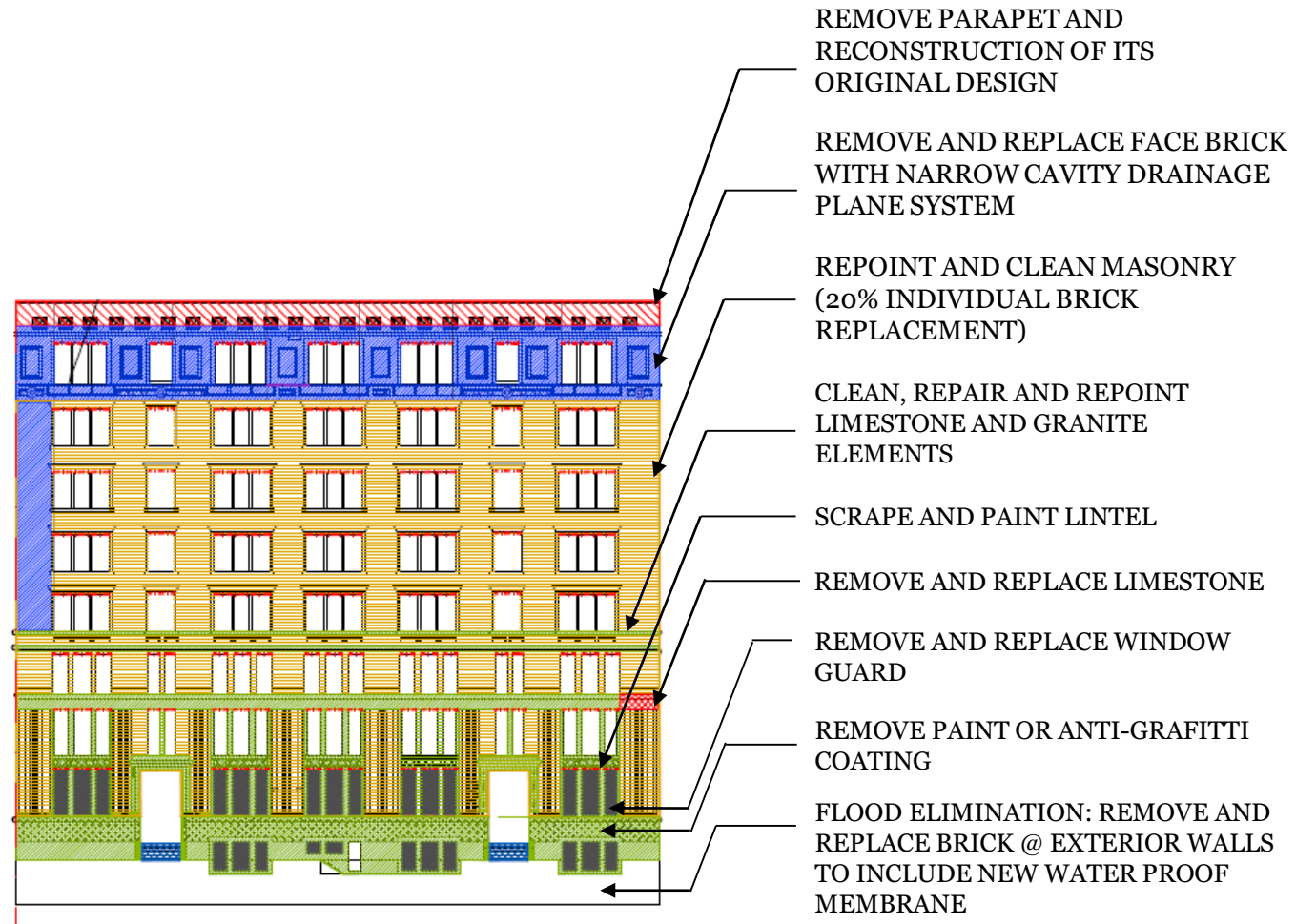
NORTH ELEVATION – E 17TH ST

Scope Drawings: Recommended work



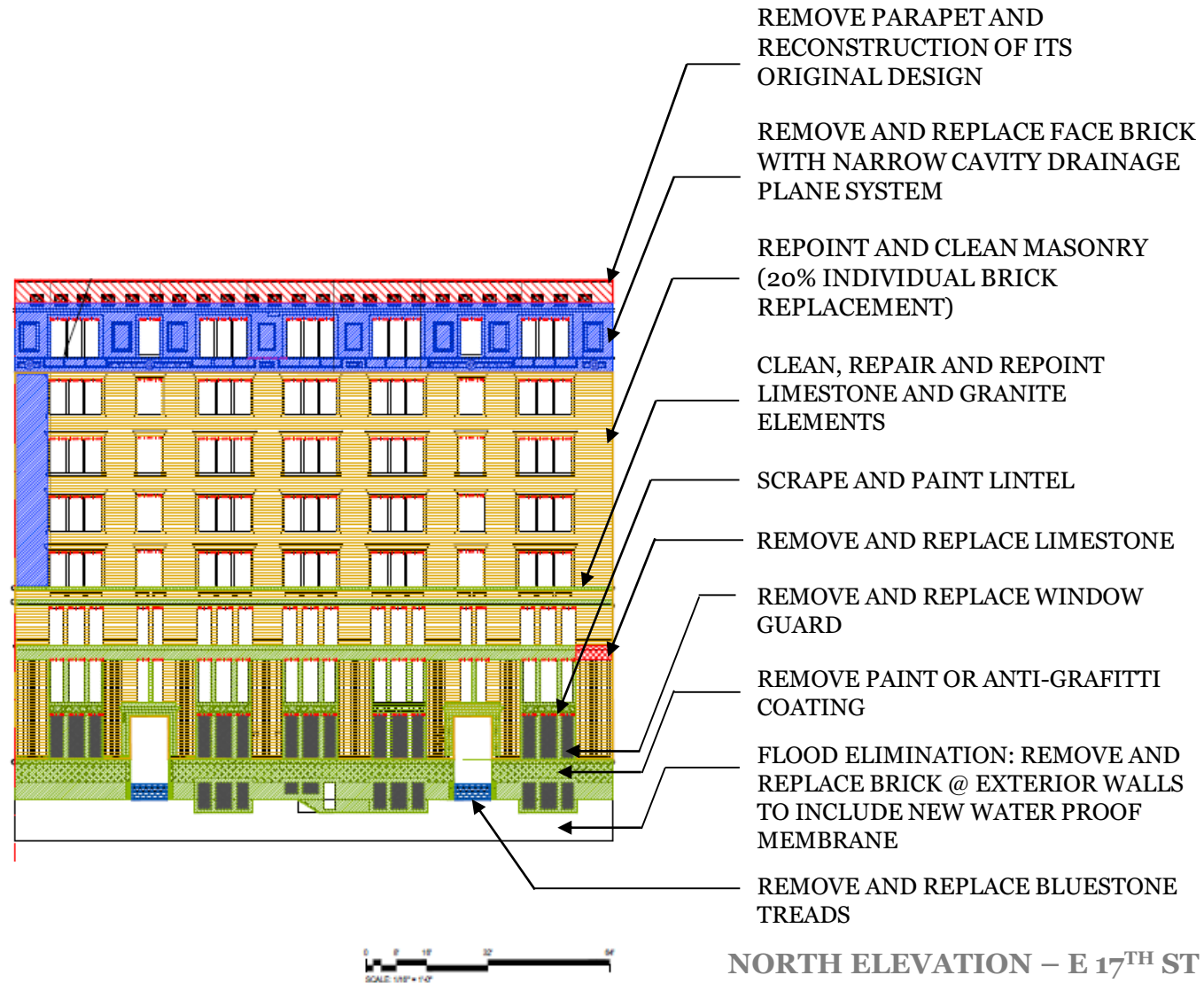
NORTH ELEVATION – E 17TH ST

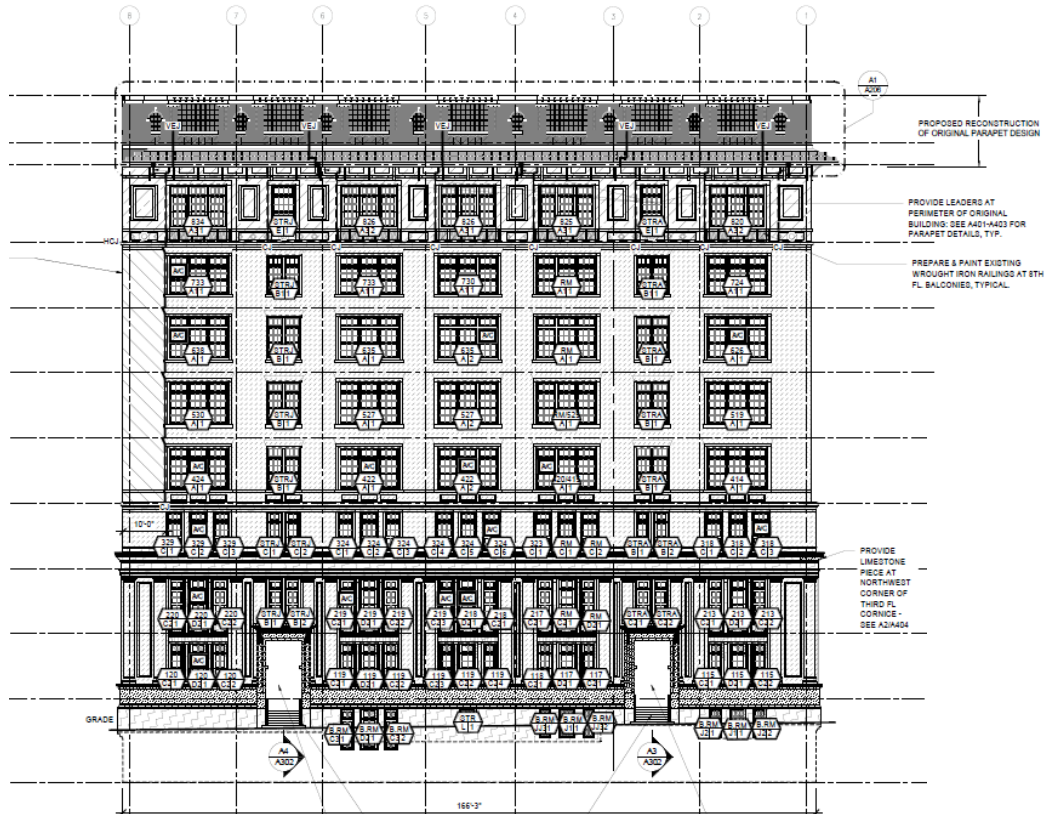
Scope Drawings: Recommended work



NORTH ELEVATION – E 17TH ST

Scope Drawings: Recommended work





NORTH ELEVATION – E 17TH ST



WEST ELEVATION
IRVING PLACE



REMOVE AND REPLACE
LIMESTONE



**WEST ELEVATION
IRVING PLACE**



REMOVE AND REPLACE
LIMESTONE

REMOVE AND REPLACE
BLUESTONE TREADS

**WEST ELEVATION
IRVING PLACE**

REMOVE PARAPET AND
RECONSTRUCTION OF ITS
ORIGINAL DESIGN



REMOVE AND REPLACE
LIMESTONE

REMOVE AND REPLACE
BLUESTONE TREADS

WEST ELEVATION
IRVING PLACE



REMOVE PARAPET AND
RECONSTRUCTION OF ITS
ORIGINAL DESIGN

REMOVE AND REPLACE FACE BRICK
WITH NARROW CAVITY DRAINAGE
PLANE SYSTEM

REMOVE AND REPLACE
LIMESTONE

REMOVE AND REPLACE
BLUESTONE TREADS

**WEST ELEVATION
IRVING PLACE**



REMOVE PARAPET AND RECONSTRUCTION OF ITS ORIGINAL DESIGN

REMOVE AND REPLACE FACE BRICK WITH NARROW CAVITY DRAINAGE PLANE SYSTEM

REPOINT AND CLEAN MASONRY (20% INDIVIDUAL BRICK REPLACEMENT)

REMOVE AND REPLACE LIMESTONE

REMOVE AND REPLACE BLUESTONE TREADS

**WEST ELEVATION
IRVING PLACE**



REMOVE PARAPET AND RECONSTRUCTION OF ITS ORIGINAL DESIGN

REMOVE AND REPLACE FACE BRICK WITH NARROW CAVITY DRAINAGE PLANE SYSTEM

REPOINT AND CLEAN MASONRY (20% INDIVIDUAL BRICK REPLACEMENT)

CLEAN, REPAIR AND REPOINT LIMESTONE AND GRANITE ELEMENTS

REMOVE AND REPLACE LIMESTONE

REMOVE AND REPLACE BLUESTONE TREADS

**WEST ELEVATION
IRVING PLACE**



- REMOVE PARAPET AND RECONSTRUCTION OF ITS ORIGINAL DESIGN
- REMOVE AND REPLACE FACE BRICK WITH NARROW CAVITY DRAINAGE PLANE SYSTEM
- REPOINT AND CLEAN MASONRY (20% INDIVIDUAL BRICK REPLACEMENT)
- CLEAN, REPAIR AND REPOINT LIMESTONE AND GRANITE ELEMENTS
- SCRAPE AND PAINT LINTEL

- REMOVE AND REPLACE LIMESTONE
- REMOVE AND REPLACE BLUESTONE TREADS

**WEST ELEVATION
IRVING PLACE**



REMOVE PARAPET AND RECONSTRUCTION OF ITS ORIGINAL DESIGN

REMOVE AND REPLACE FACE BRICK WITH NARROW CAVITY DRAINAGE PLANE SYSTEM

REPOINT AND CLEAN MASONRY (20% INDIVIDUAL BRICK REPLACEMENT)

CLEAN, REPAIR AND REPOINT LIMESTONE AND GRANITE ELEMENTS

SCRAPE AND PAINT LINTEL

REMOVE AND REPLACE WINDOW GUARD

REMOVE AND REPLACE LIMESTONE

REMOVE AND REPLACE BLUESTONE TREADS

**WEST ELEVATION
IRVING PLACE**



REMOVE PARAPET AND RECONSTRUCTION OF ITS ORIGINAL DESIGN

REMOVE AND REPLACE FACE BRICK WITH NARROW CAVITY DRAINAGE PLANE SYSTEM

REPOINT AND CLEAN MASONRY (20% INDIVIDUAL BRICK REPLACEMENT)

CLEAN, REPAIR AND REPOINT LIMESTONE AND GRANITE ELEMENTS

SCRAPE AND PAINT LINTEL

REMOVE AND REPLACE WINDOW GUARD

REMOVE PAINT OR ANTI-GRAFFITI COATING

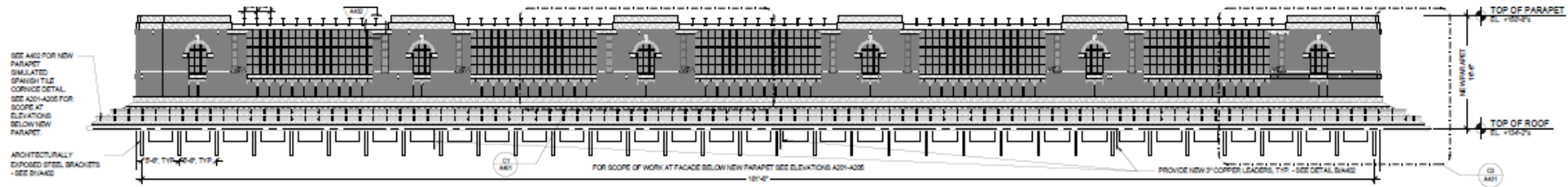
REMOVE AND REPLACE LIMESTONE

REMOVE AND REPLACE BLUESTONE TREADS

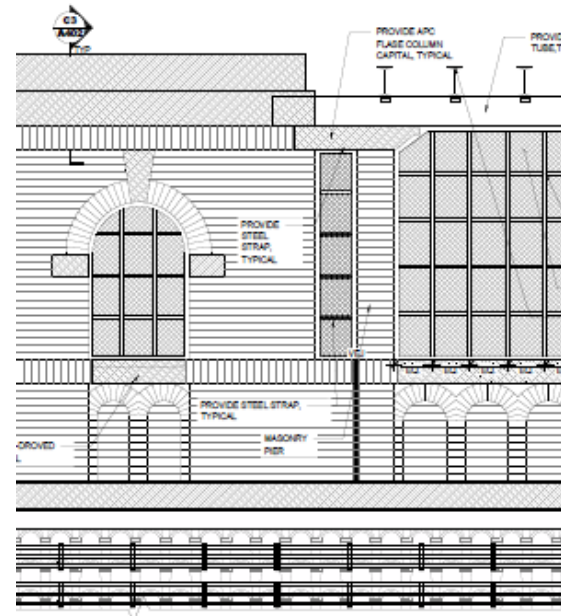
**WEST ELEVATION
IRVING PLACE**



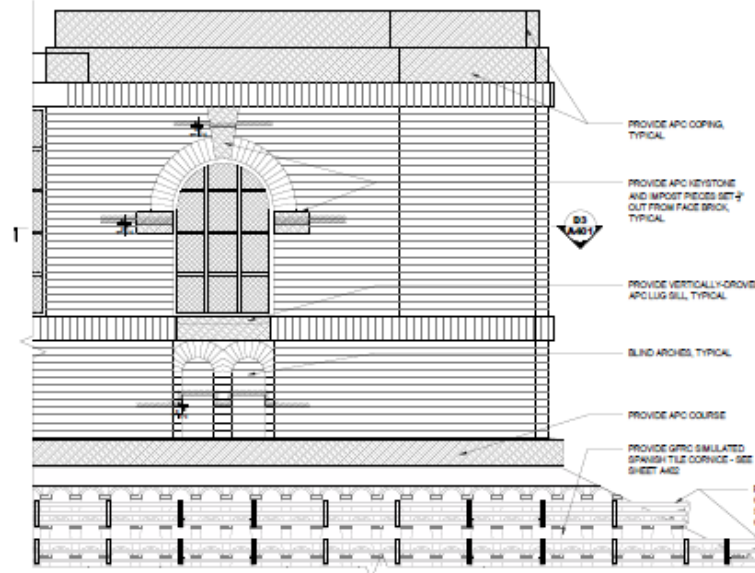
**WEST ELEVATION
IRVING PLACE**



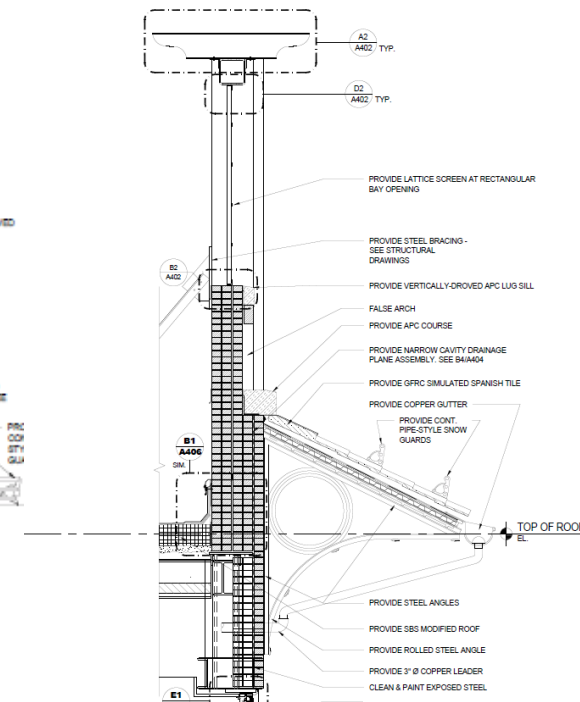
PARTIAL ELEVATION AT PARPET IRVING PLACE



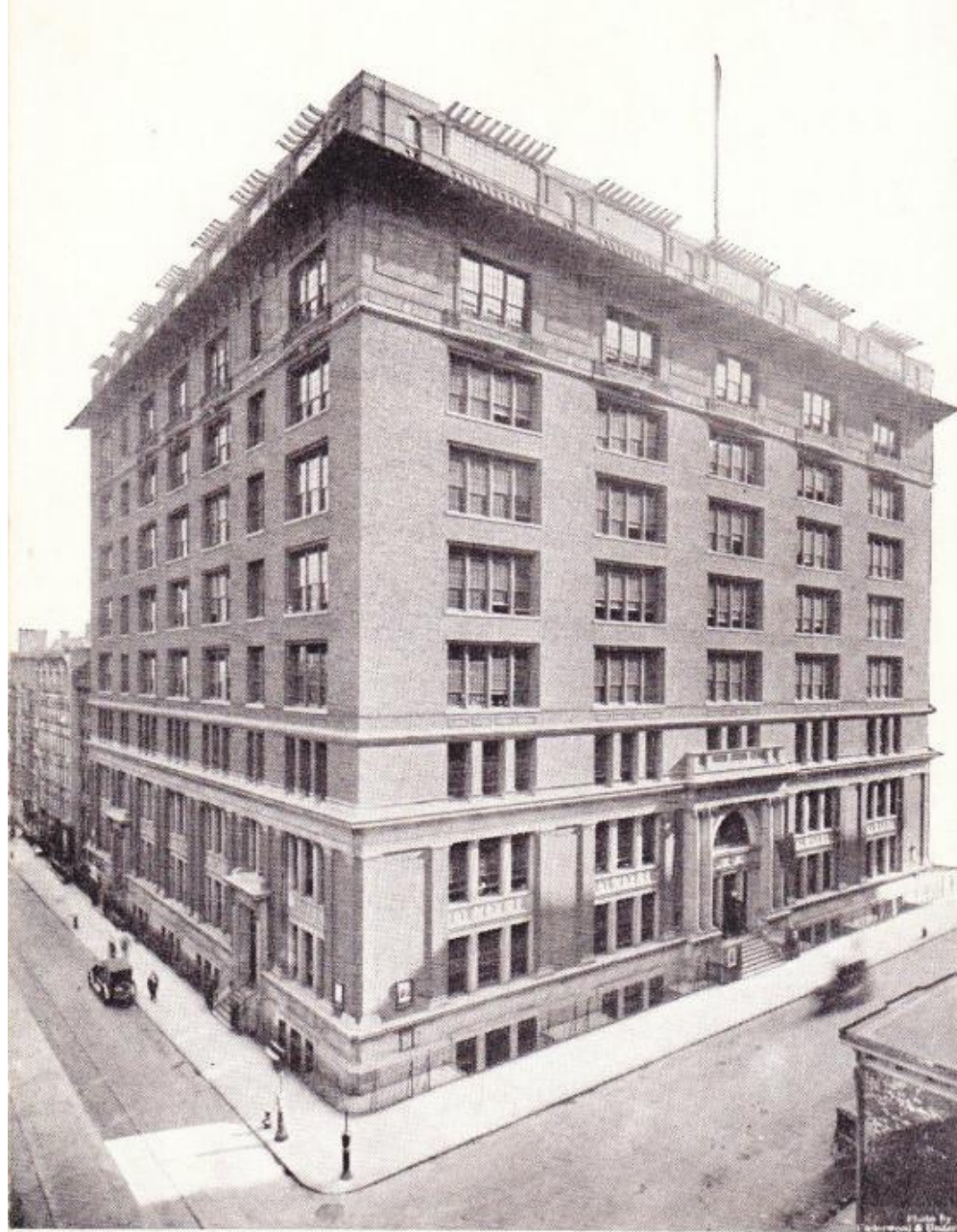
DETAIL OF IRVING PLACE ELEVATION - TYPICAL BAY AT PARPET



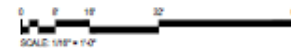
DETAIL OF IRVING PLACE ELEVATION - SOUTHERN CORNER AT PARPET



C3 SECTION-PARAPET DETAIL

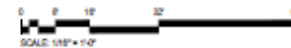
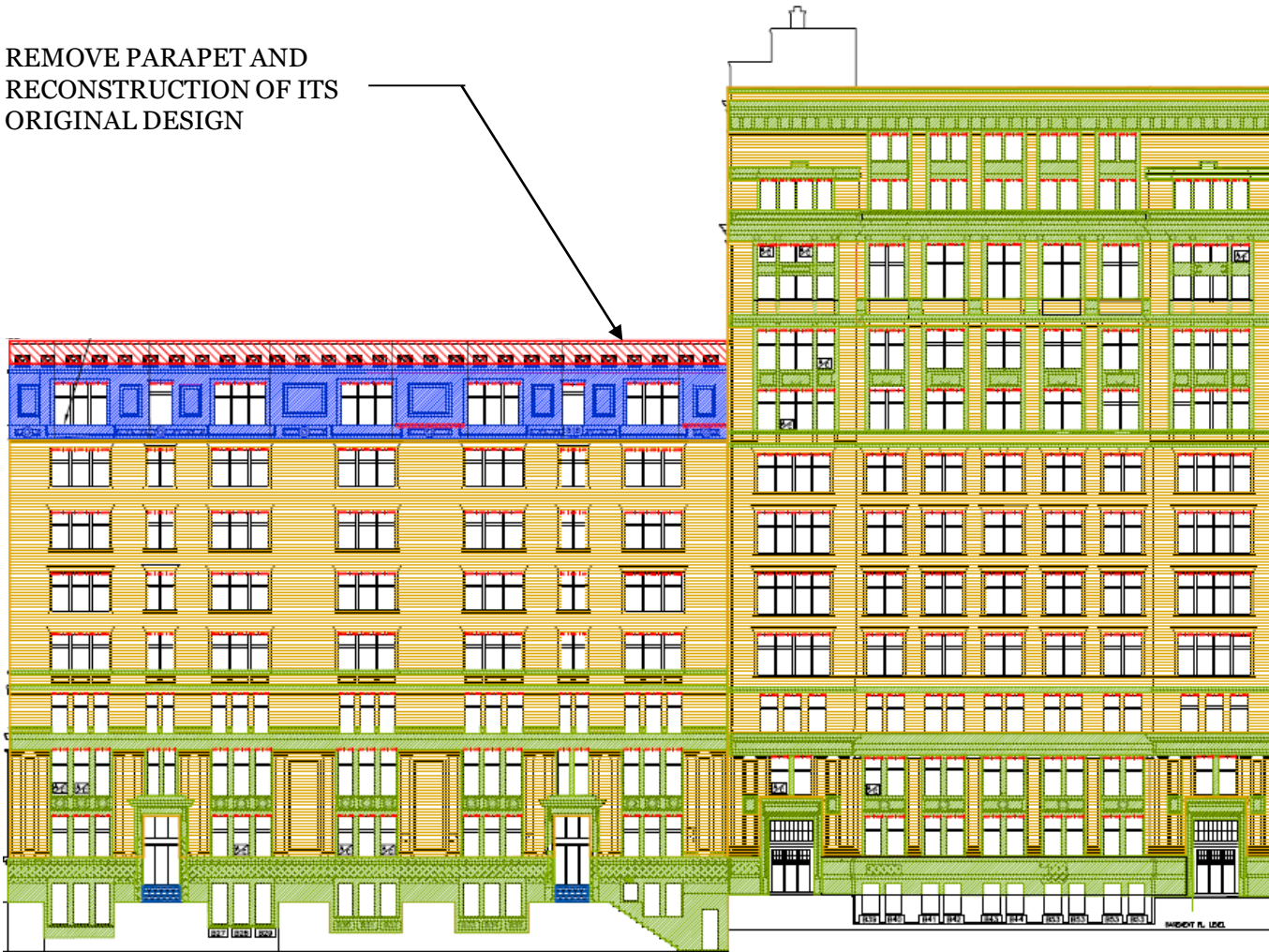


WASHINGTON IRVING HIGH SCHOOL
NEW YORK



SOUTH ELEVATION

REMOVE PARAPET AND
RECONSTRUCTION OF ITS
ORIGINAL DESIGN



SOUTH ELEVATION

REMOVE PARAPET AND
RECONSTRUCTION OF ITS
ORIGINAL DESIGN

REMOVE AND REPLACE FACE BRICK
WITH NARROW CAVITY DRAINAGE
PLANE SYSTEM

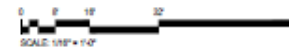


SOUTH ELEVATION

REMOVE PARAPET AND
RECONSTRUCTION OF ITS
ORIGINAL DESIGN

REMOVE AND REPLACE FACE BRICK
WITH NARROW CAVITY DRAINAGE
PLANE SYSTEM

REPOINT AND CLEAN
MASONRY (20%
INDIVIDUAL BRICK
REPLACEMENT)



SOUTH ELEVATION

REMOVE PARAPET AND
RECONSTRUCTION OF ITS
ORIGINAL DESIGN

REMOVE AND REPLACE FACE BRICK
WITH NARROW CAVITY DRAINAGE
PLANE SYSTEM

REPOINT AND CLEAN
MASONRY (20%
INDIVIDUAL BRICK
REPLACEMENT)

CLEAN, REPAIR AND
REPOINT LIMESTONE AND
GRANITE ELEMENTS



SOUTH ELEVATION

REMOVE PARAPET AND
RECONSTRUCTION OF ITS
ORIGINAL DESIGN

REMOVE AND REPLACE FACE BRICK
WITH NARROW CAVITY DRAINAGE
PLANE SYSTEM

REPOINT AND CLEAN
MASONRY (20%
INDIVIDUAL BRICK
REPLACEMENT)

CLEAN, REPAIR AND
REPOINT LIMESTONE AND
GRANITE ELEMENTS

SCRAPE AND PAINT LINTEL



SOUTH ELEVATION

REMOVE PARAPET AND
RECONSTRUCTION OF ITS
ORIGINAL DESIGN

REMOVE AND REPLACE FACE BRICK
WITH NARROW CAVITY DRAINAGE
PLANE SYSTEM

REPOINT AND CLEAN
MASONRY (20%
INDIVIDUAL BRICK
REPLACEMENT)

CLEAN, REPAIR AND
REPOINT LIMESTONE AND
GRANITE ELEMENTS

SCRAPE AND PAINT LINTEL

REMOVE PAINT OR ANTI-
GRAFITTI COATING



SOUTH ELEVATION

REMOVE PARAPET AND
RECONSTRUCTION OF ITS
ORIGINAL DESIGN

REMOVE AND REPLACE FACE BRICK
WITH NARROW CAVITY DRAINAGE
PLANE SYSTEM

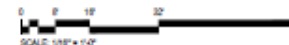
REPOINT AND CLEAN
MASONRY (20%
INDIVIDUAL BRICK
REPLACEMENT)

CLEAN, REPAIR AND
REPOINT LIMESTONE AND
GRANITE ELEMENTS

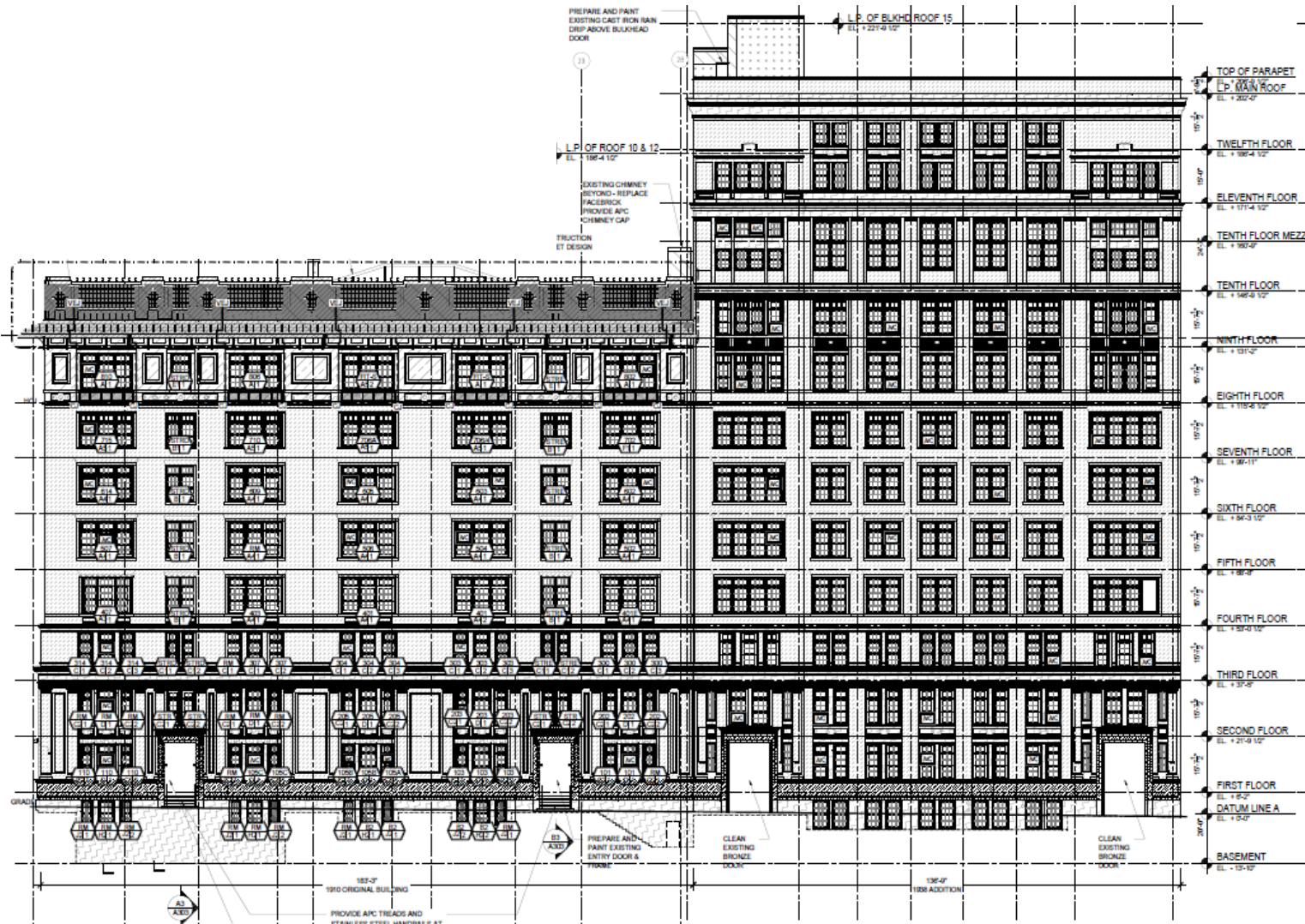
SCRAPE AND PAINT LINTEL

REMOVE PAINT OR ANTI-
GRAFITTI COATING

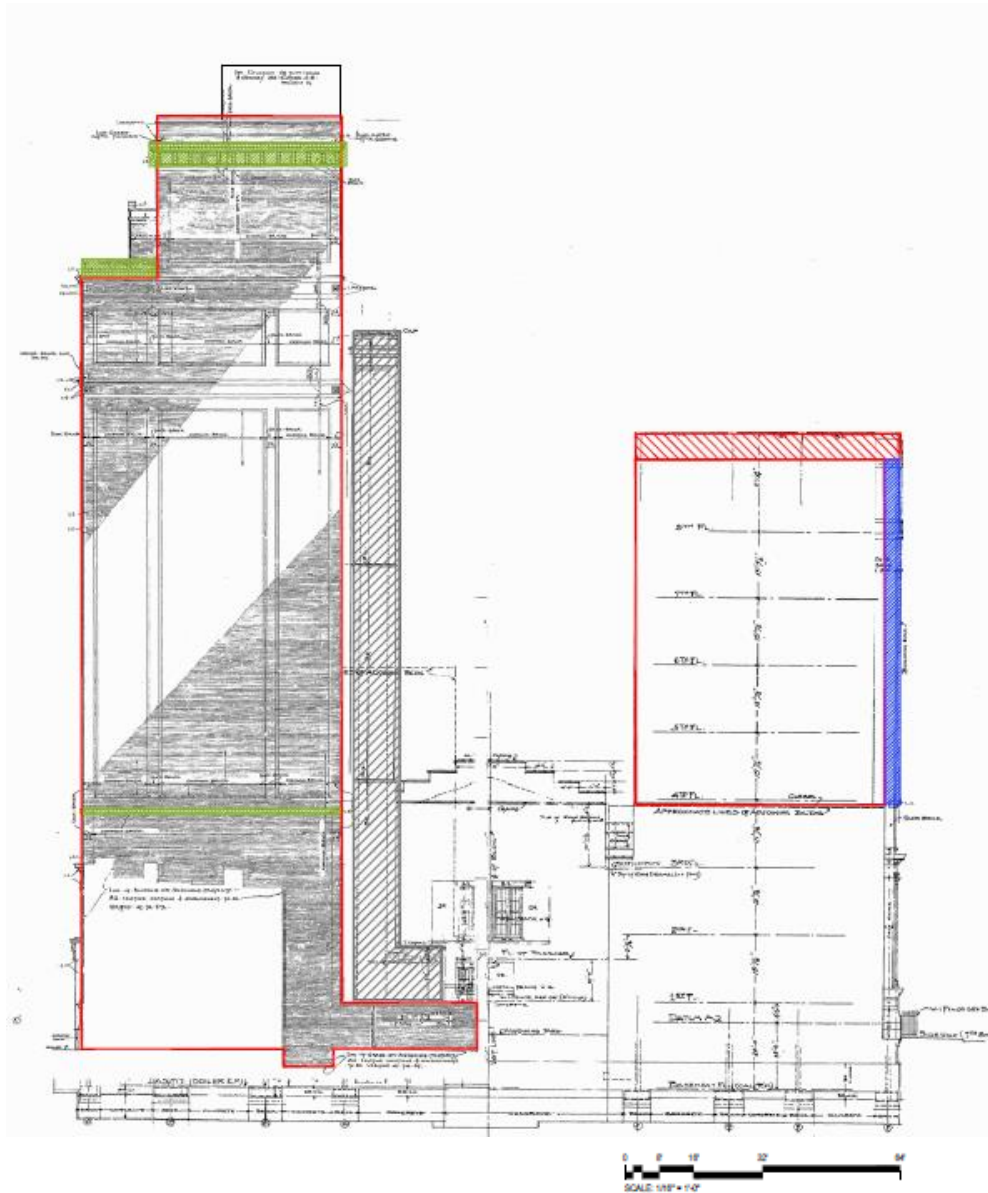
REMOVE AND REPLACE
BLUESTONE TREADS



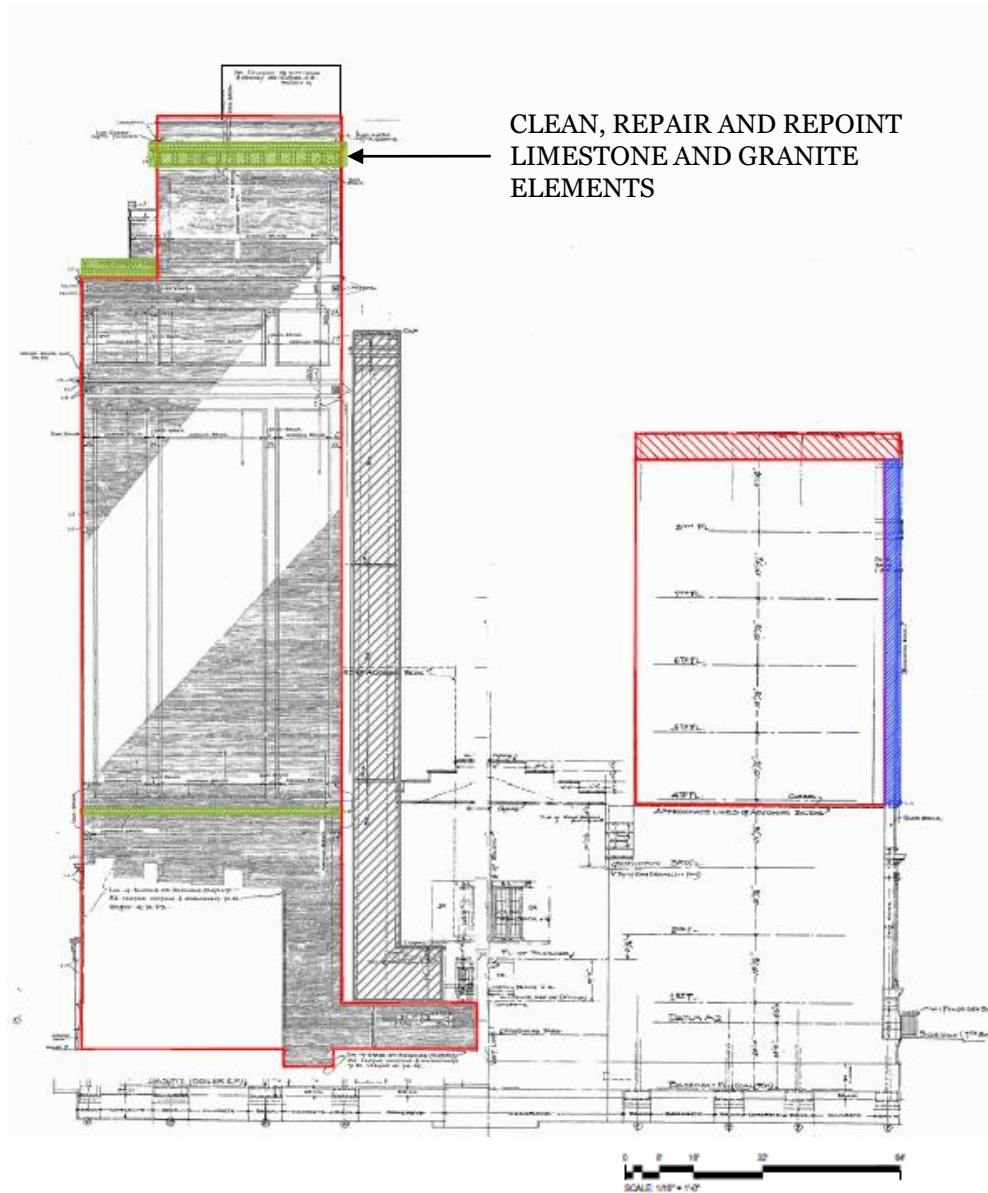
SOUTH ELEVATION



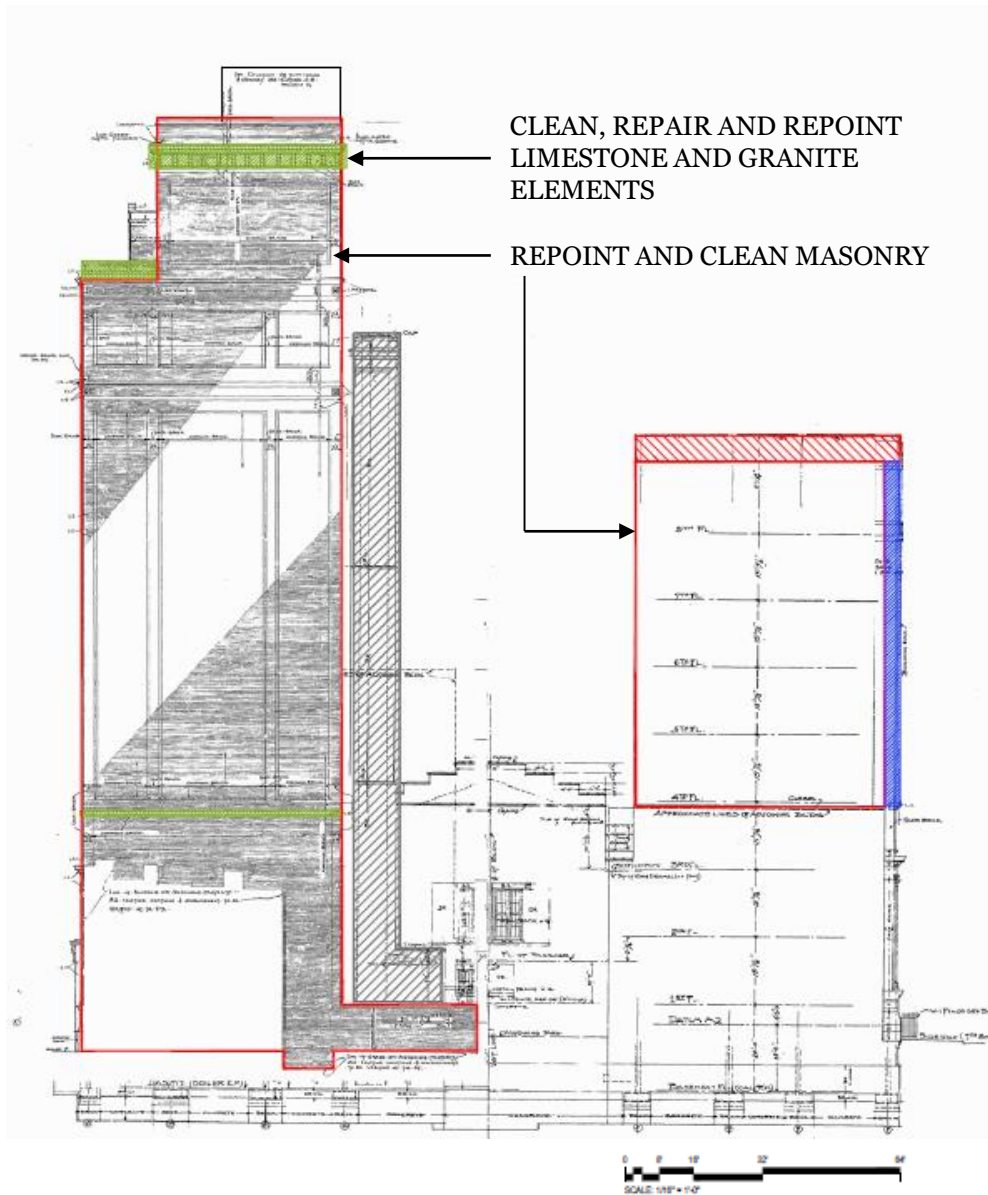
SOUTH ELEVATION



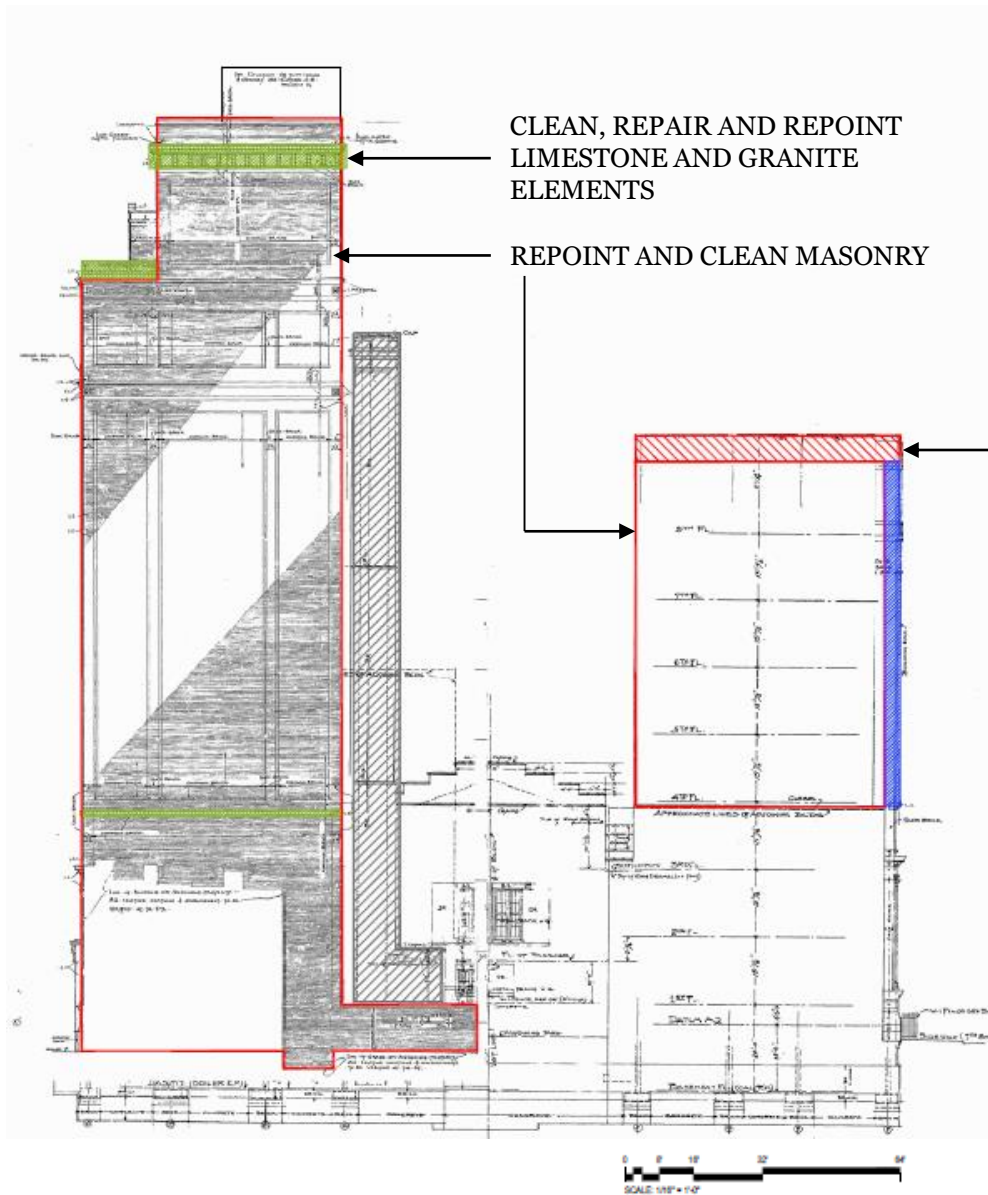
EAST ELEVATION



EAST ELEVATION



EAST ELEVATION

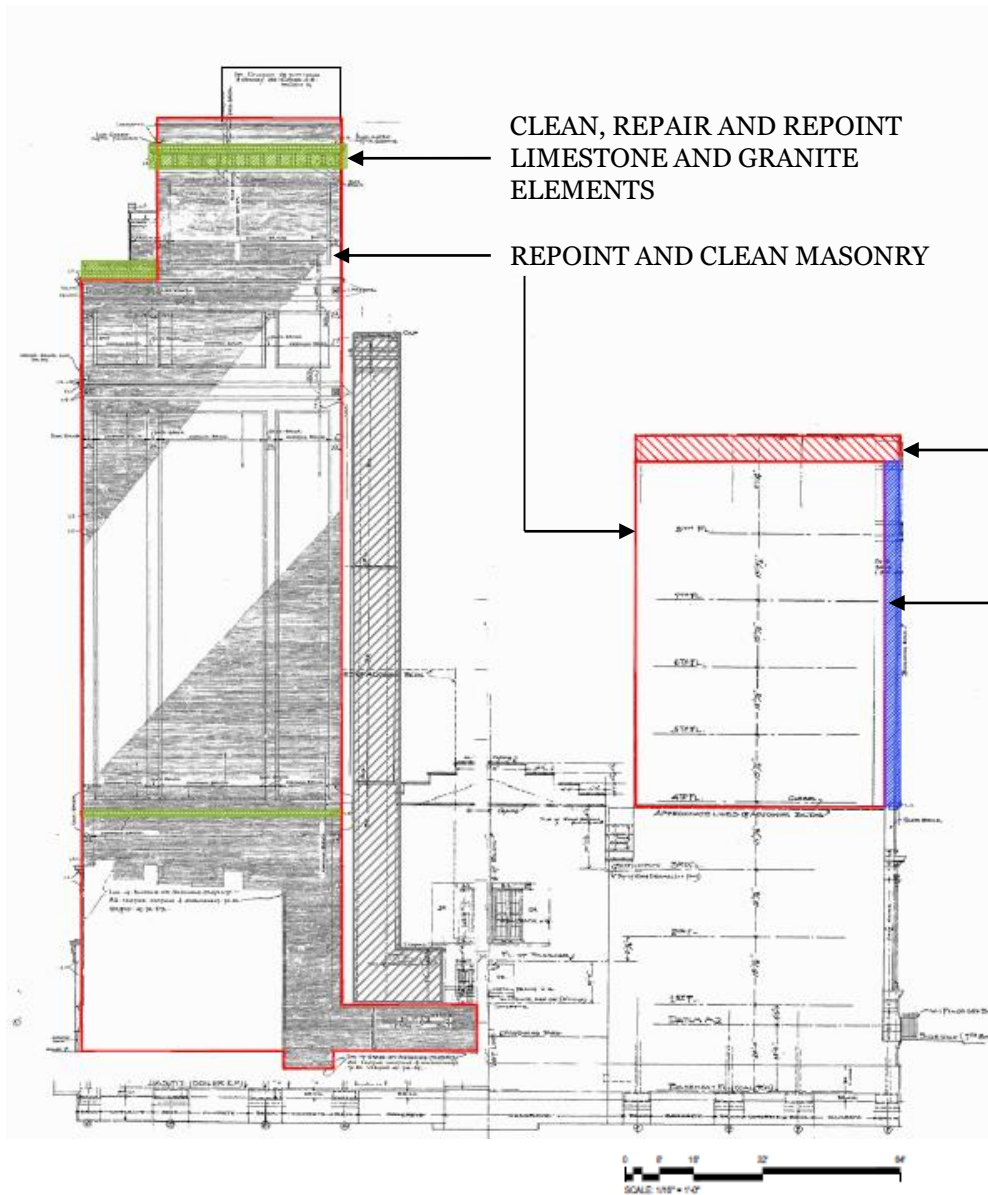


CLEAN, REPAIR AND REPOINT
LIMESTONE AND GRANITE
ELEMENTS

REPOINT AND CLEAN MASONRY

REMOVE PARAPET AND RECONSTRUCTION OF
ITS ORIGINAL DESIGN

EAST ELEVATION



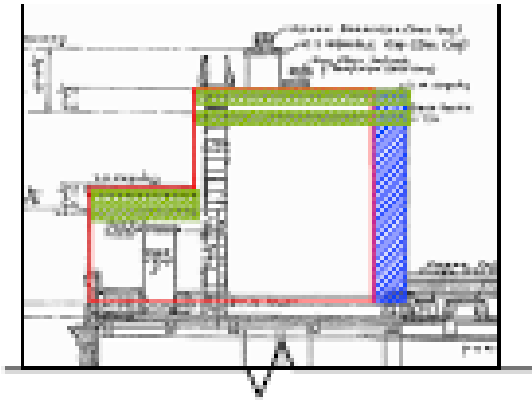
CLEAN, REPAIR AND REPOINT
LIMESTONE AND GRANITE
ELEMENTS

REPOINT AND CLEAN MASONRY

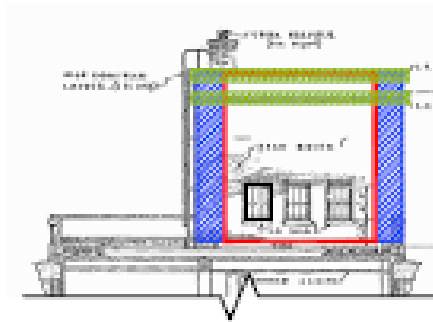
REMOVE PARAPET AND RECONSTRUCTION OF
ITS ORIGINAL DESIGN

REMOVE AND REPLACE FACE BRICK WITH
NARROW CAVITY DRAINAGE PLANE SYSTEM

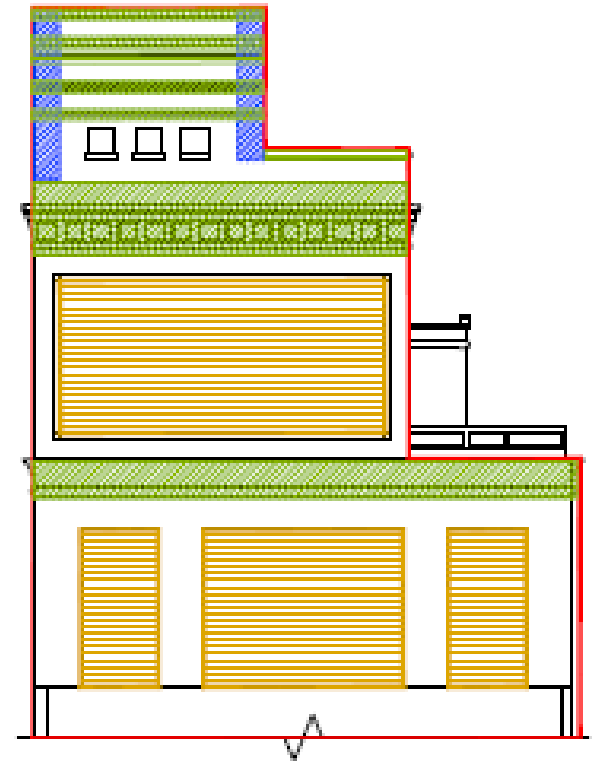
EAST ELEVATION



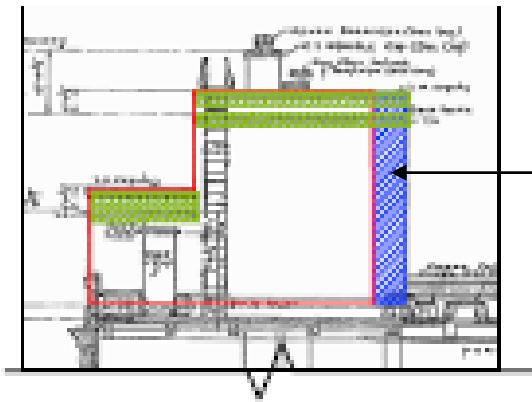
TANK ROOM SOUTH ELEVATION



TANK ROOM EAST ELEVATION

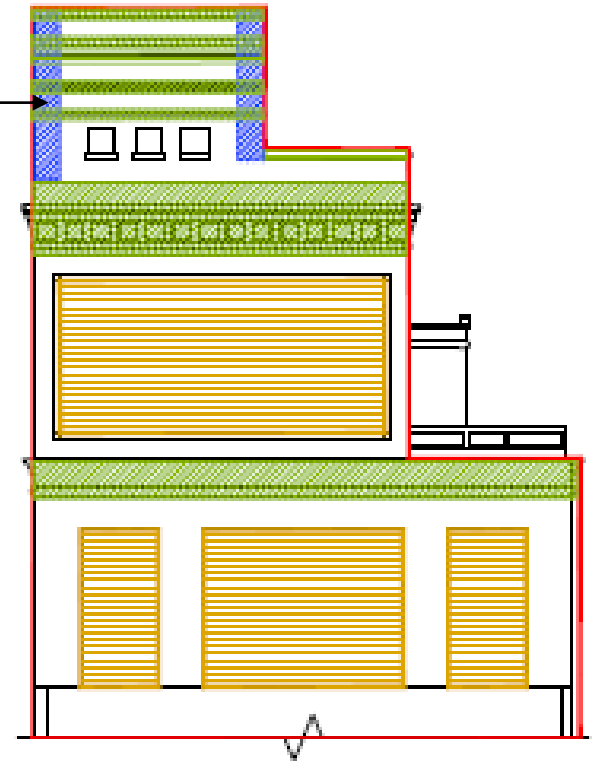


ADDITIONS WEST ELEVATION

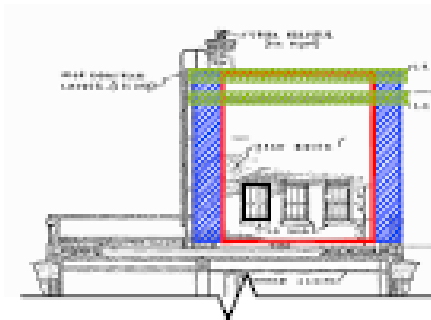


TANK ROOM SOUTH ELEVATION

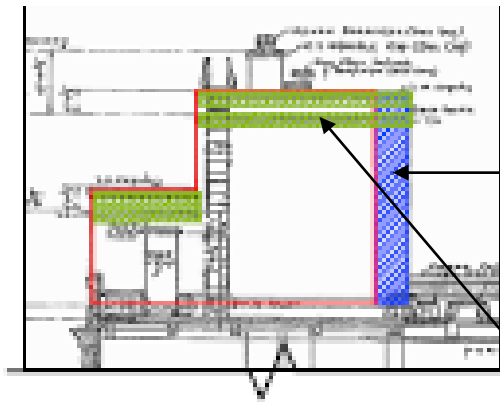
REMOVE AND REPLACE
FACE BRICK WITH
NARROW CAVITY
DRAINAGE PLANE SYSTEM



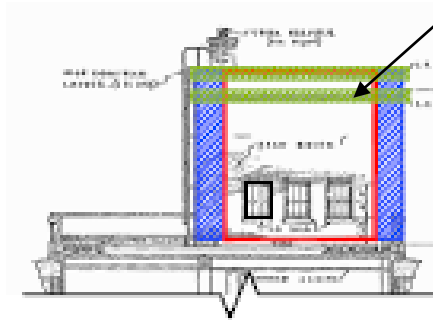
ADDITIONS WEST ELEVATION



TANK ROOM EAST
ELEVATION



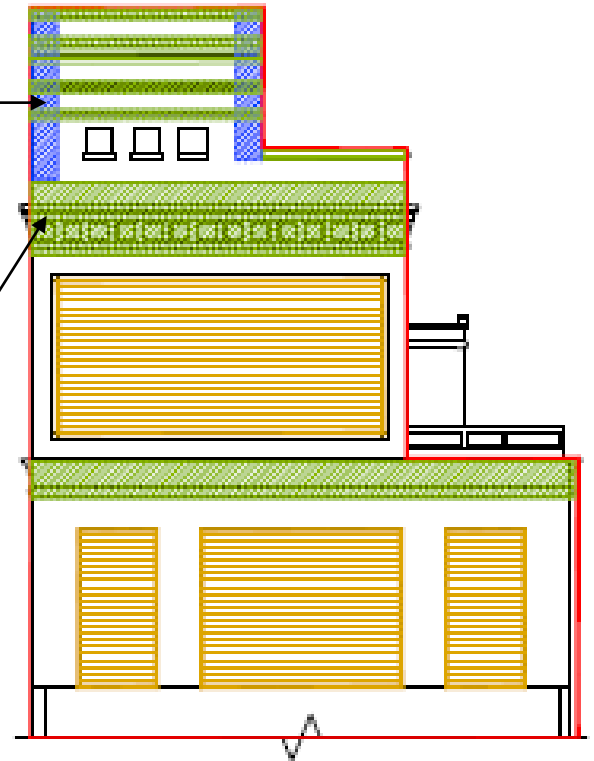
TANK ROOM SOUTH ELEVATION



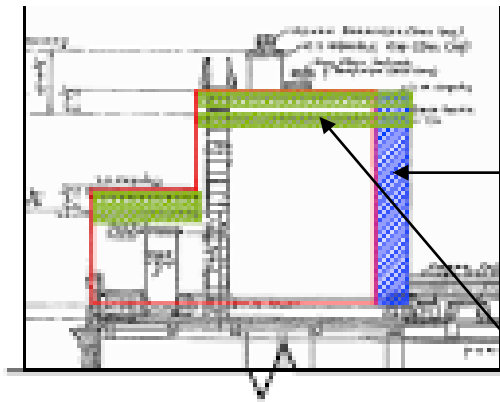
TANK ROOM EAST ELEVATION

REMOVE AND REPLACE
FACE BRICK WITH
NARROW CAVITY
DRAINAGE PLANE SYSTEM

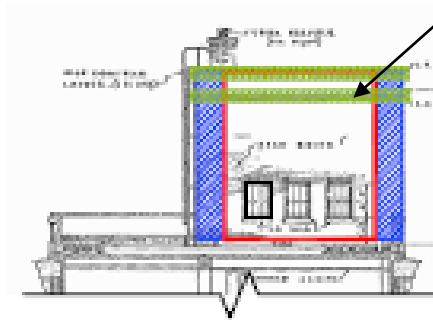
CLEAN, REPAIR AND
REPOINT LIMESTONE AND
GRANITE ELEMENTS



ADDITIONS WEST ELEVATION



TANK ROOM SOUTH ELEVATION

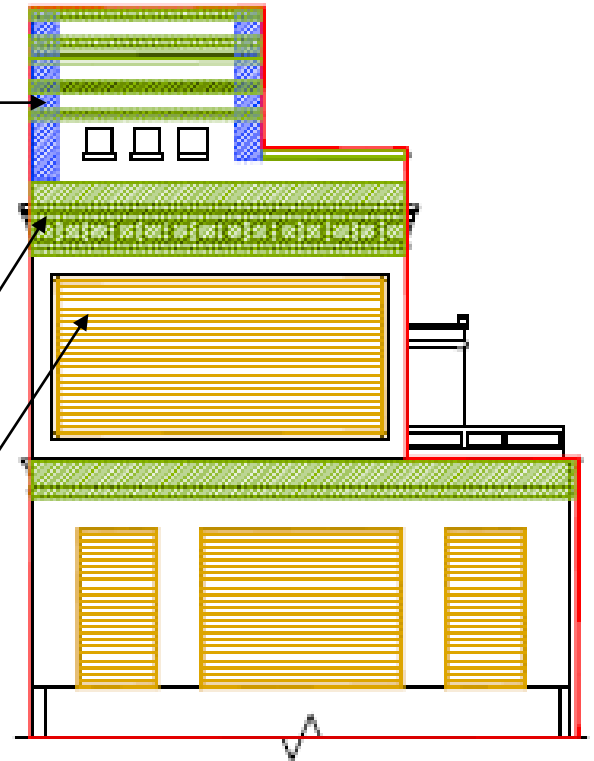


TANK ROOM EAST ELEVATION

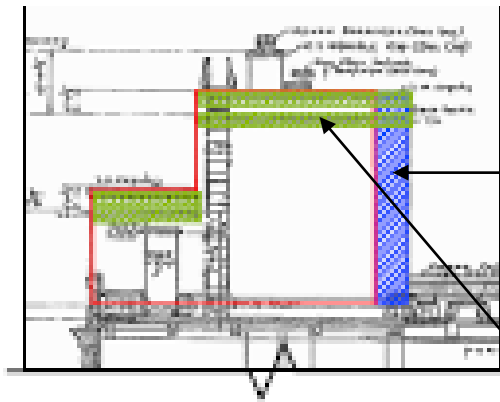
REMOVE AND REPLACE
FACE BRICK WITH
NARROW CAVITY
DRAINAGE PLANE SYSTEM

CLEAN, REPAIR AND
REPOINT LIMESTONE AND
GRANITE ELEMENTS

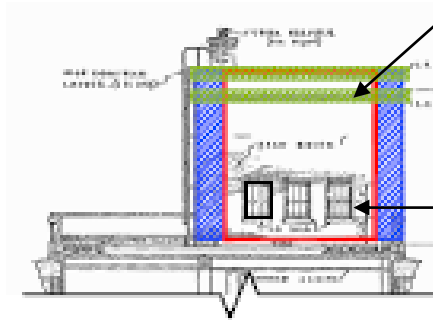
REPOINT AND CLEAN
MASONRY (20%
INDIVIDUAL BRICK
REPLACEMENT)



ADDITIONS WEST ELEVATION



TANK ROOM SOUTH ELEVATION



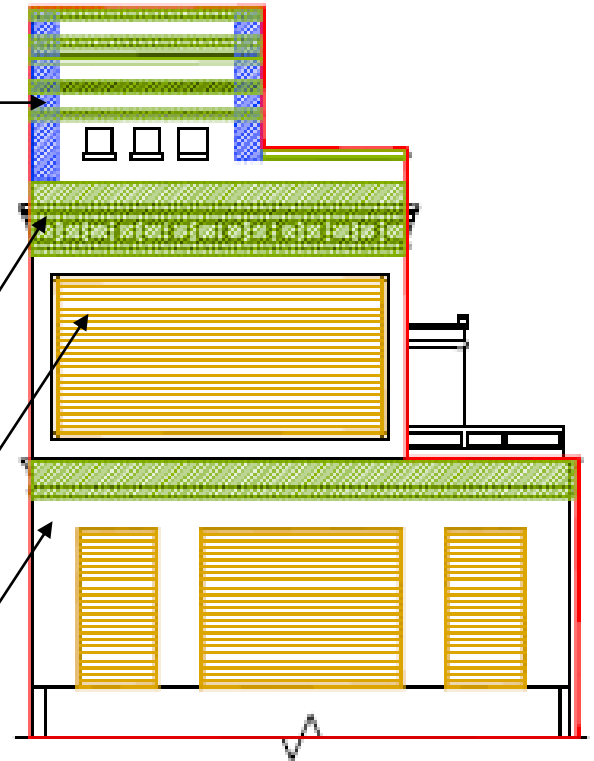
TANK ROOM EAST ELEVATION

REMOVE AND REPLACE
FACE BRICK WITH
NARROW CAVITY
DRAINAGE PLANE SYSTEM

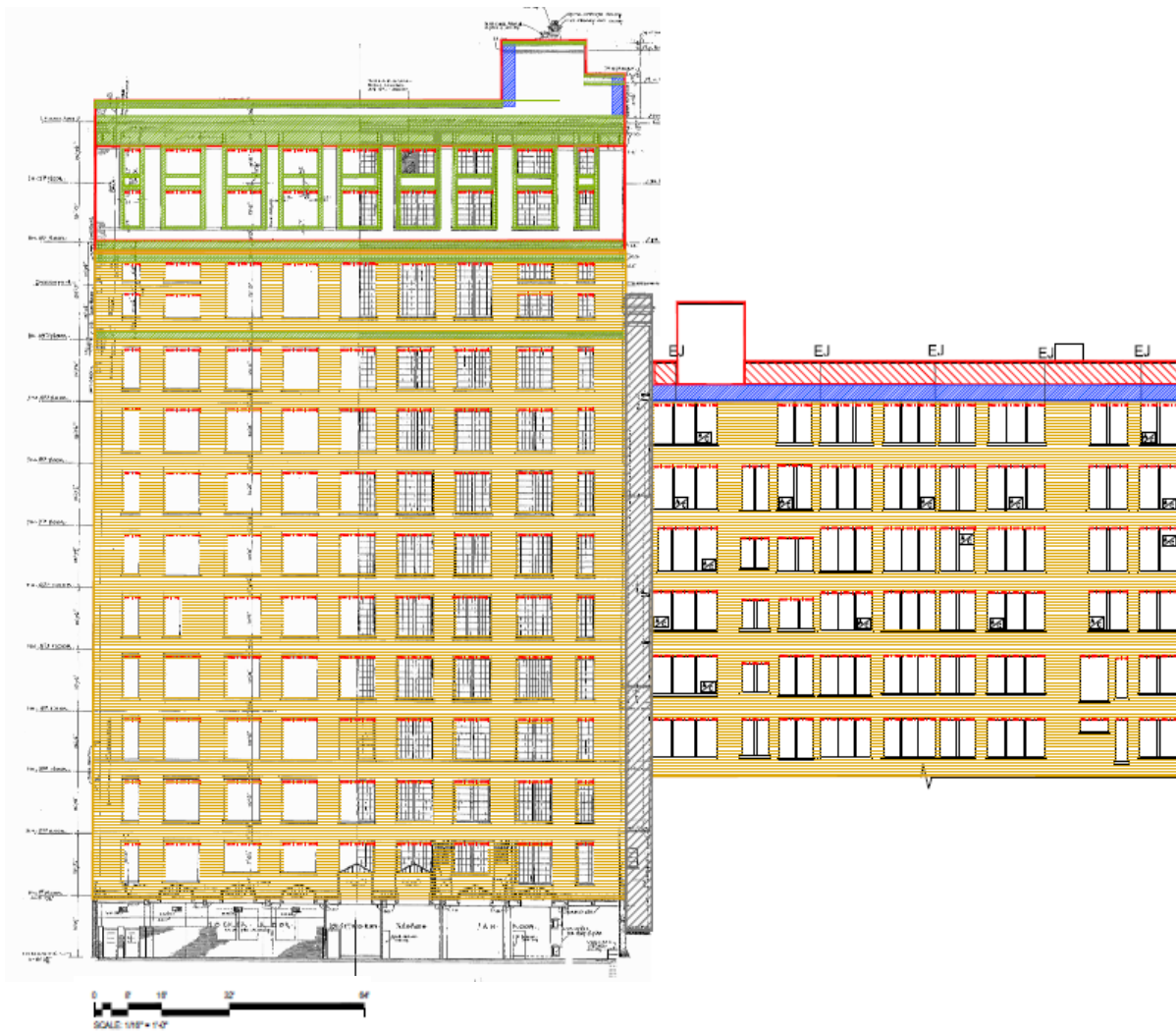
CLEAN, REPAIR AND
REPOINT LIMESTONE AND
GRANITE ELEMENTS

REPOINT AND CLEAN
MASONRY (20%
INDIVIDUAL BRICK
REPLACEMENT)

REPOINT AND CLEAN
MASONRY

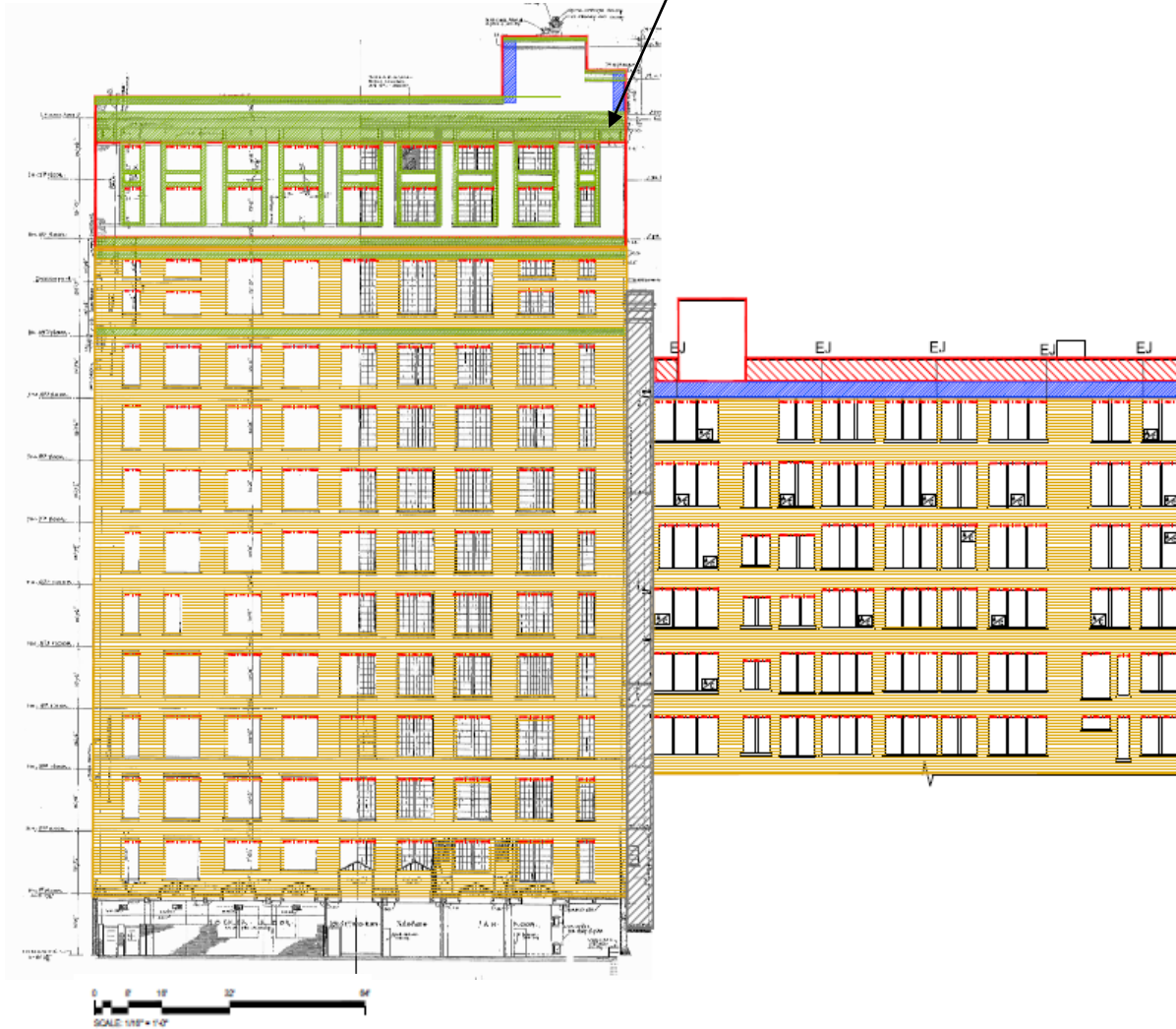


ADDITIONS WEST ELEVATION

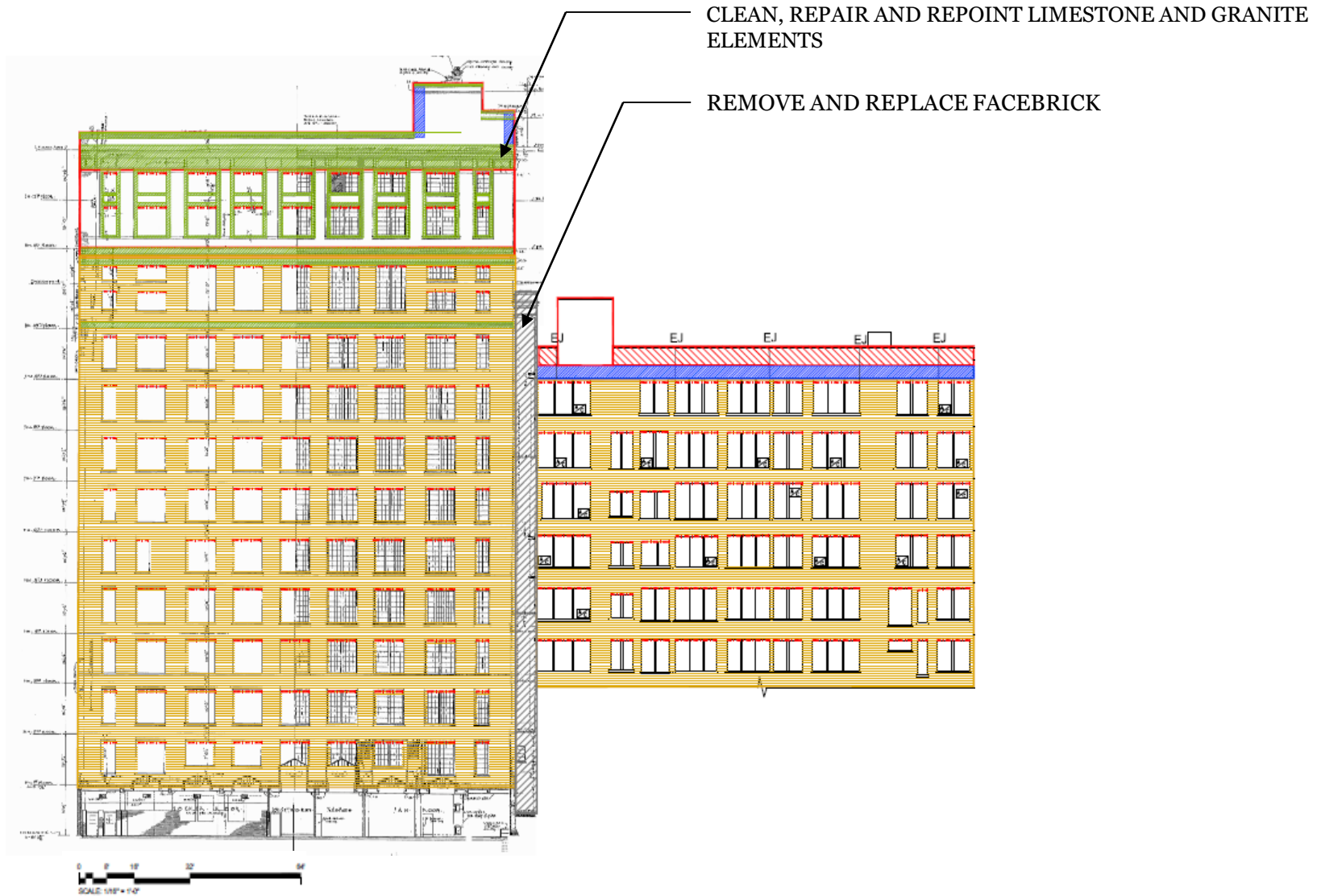


SOUTH COURT ELEVATION

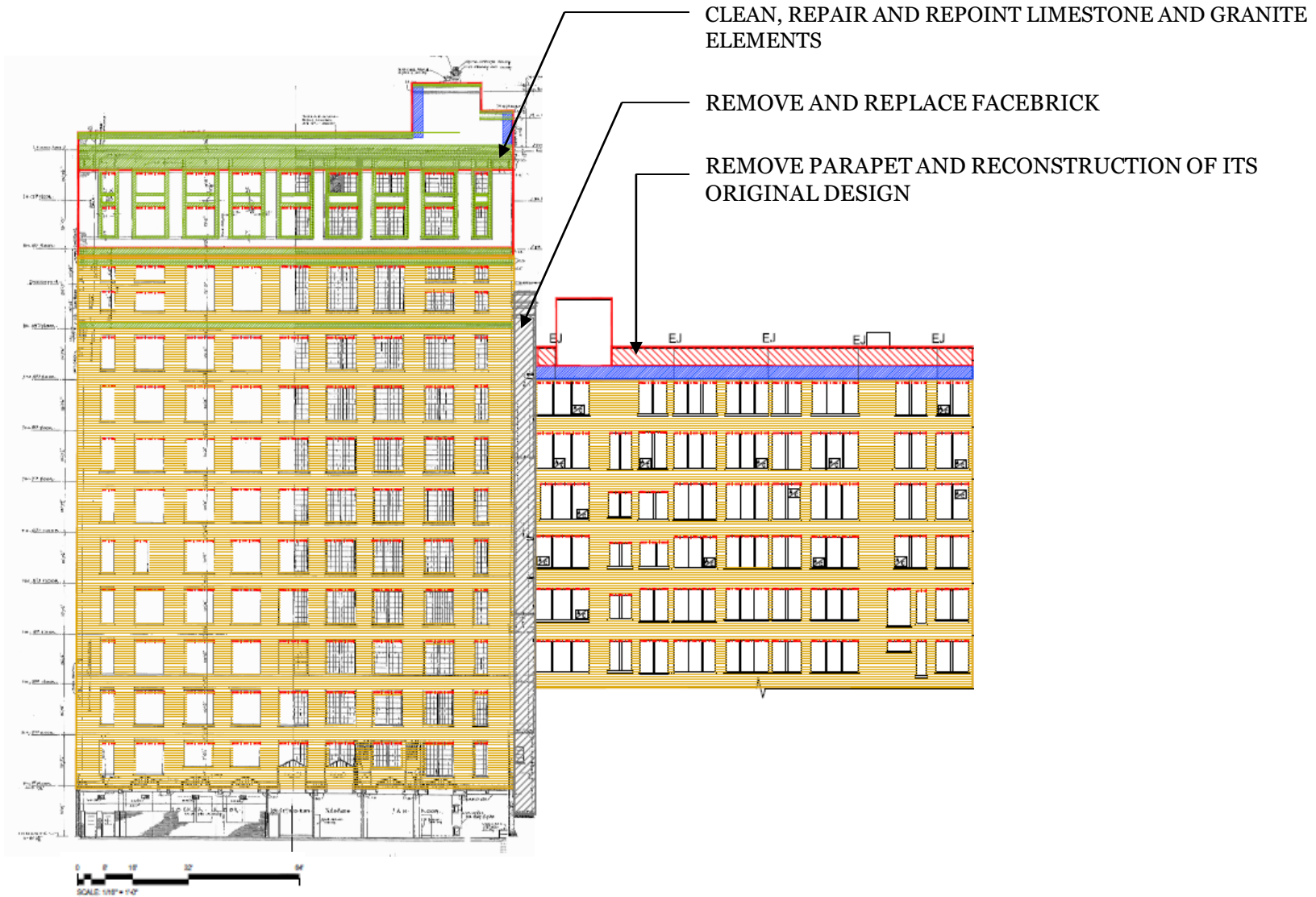
CLEAN, REPAIR AND REPOINT LIMESTONE AND GRANITE ELEMENTS



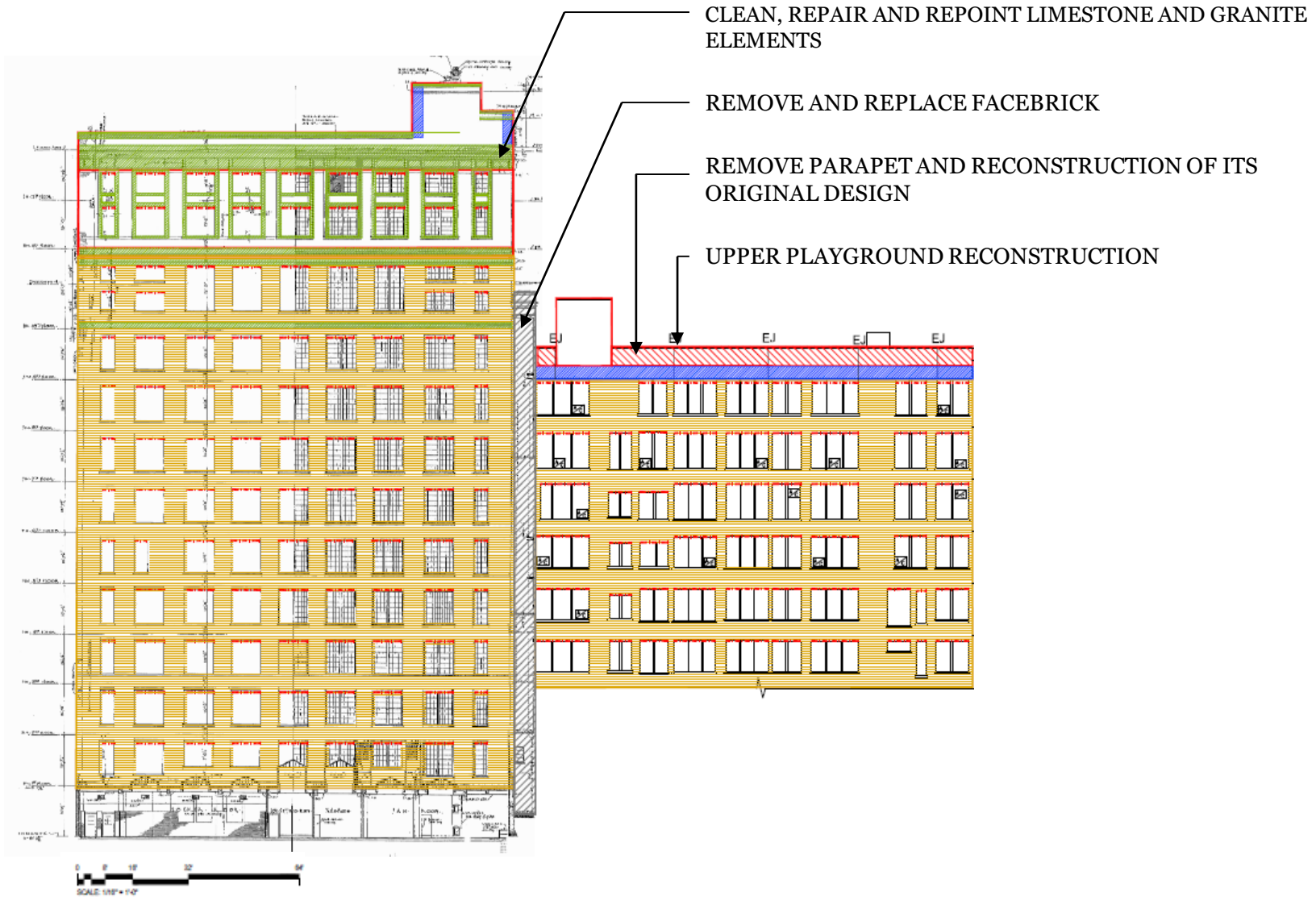
SOUTH COURT ELEVATION



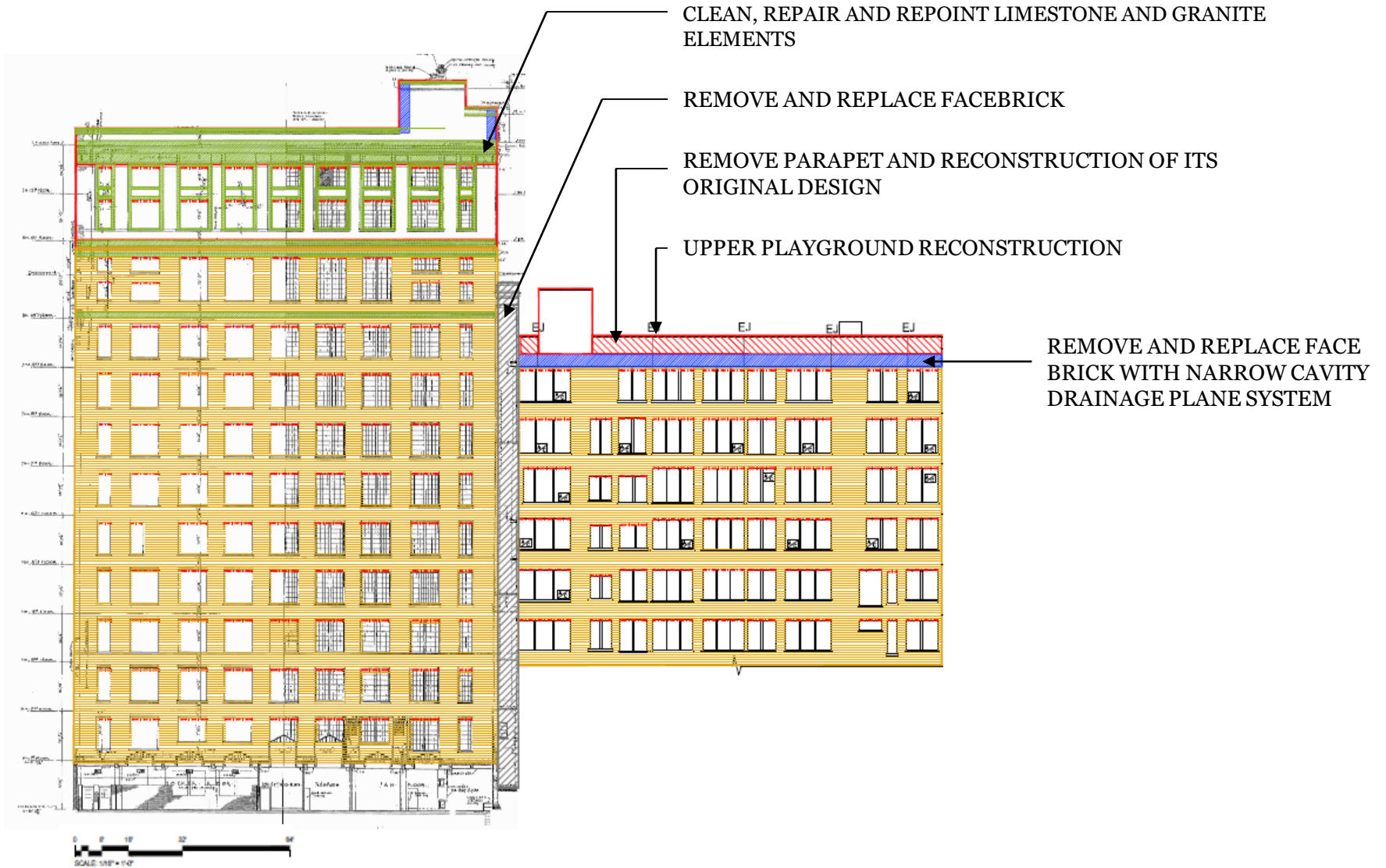
SOUTH COURT ELEVATION



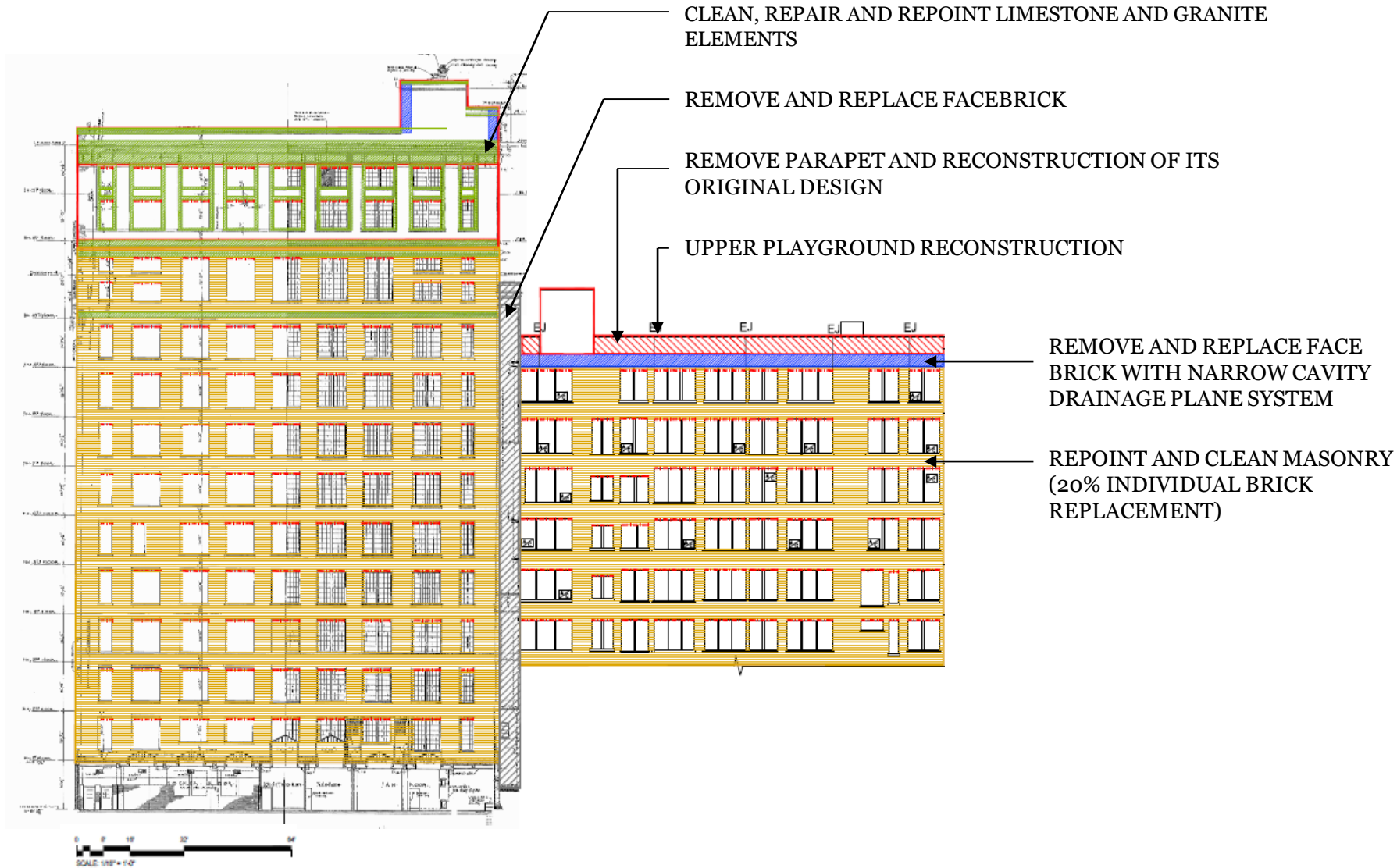
SOUTH COURT ELEVATION



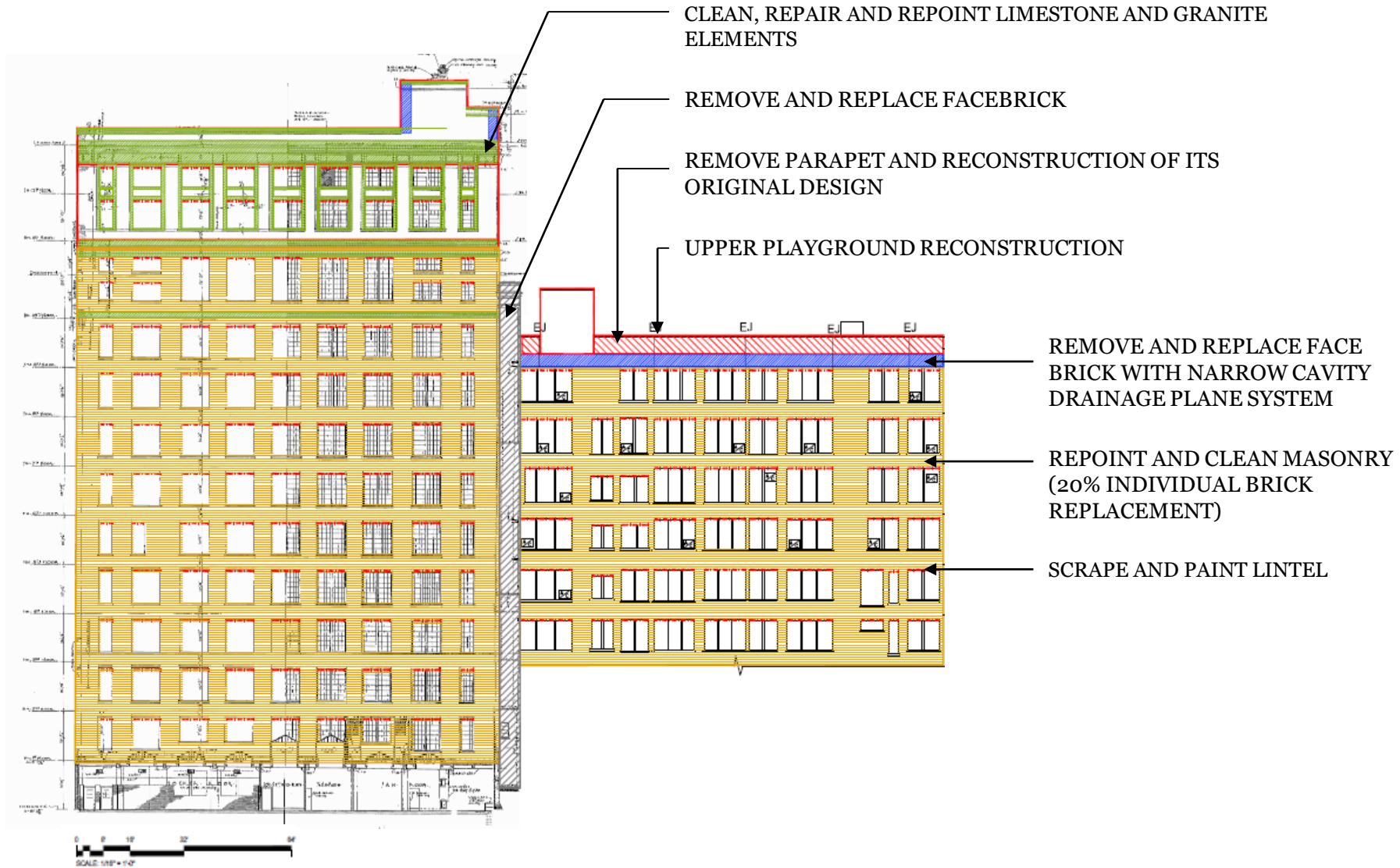
SOUTH COURT ELEVATION



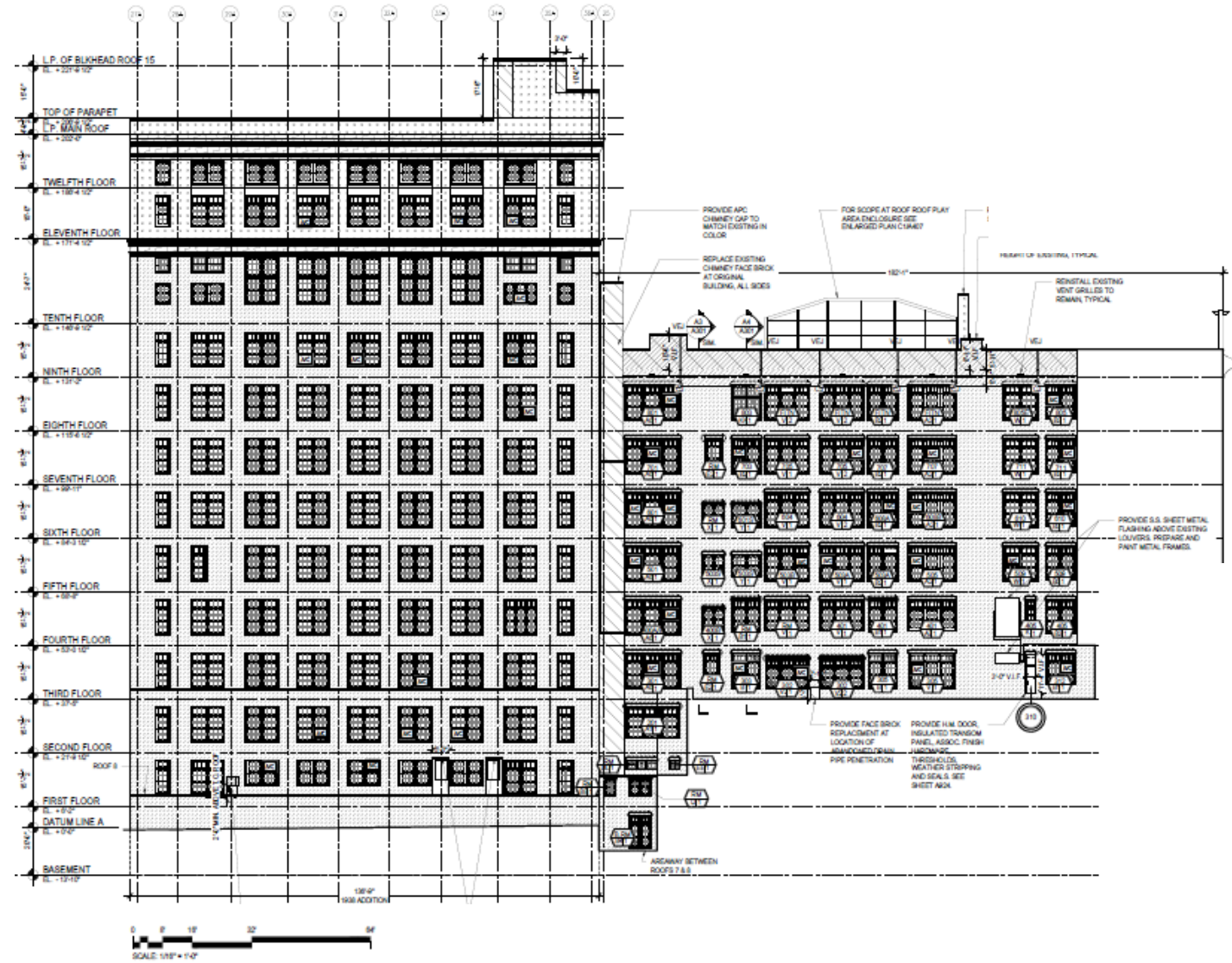
SOUTH COURT ELEVATION



SOUTH COURT ELEVATION



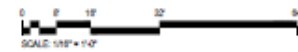
SOUTH COURT ELEVATION



SOUTH COURT ELEVATION



WEST COURT ELEVATION



NORTH COURT ELEVATION



REMOVE PARAPET AND
RECONSTRUCTION OF ITS
ORIGINAL DESIGN



WEST COURT ELEVATION



NORTH COURT ELEVATION

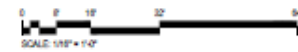


REMOVE PARAPET AND
RECONSTRUCTION OF ITS
ORIGINAL DESIGN

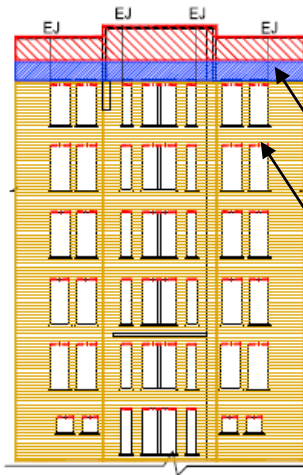
REMOVE AND REPLACE FACE
BRICK WITH NARROW CAVITY
DRAINAGE PLANE SYSTEM



WEST COURT ELEVATION



NORTH COURT ELEVATION



REMOVE PARAPET AND
RECONSTRUCTION OF ITS
ORIGINAL DESIGN

REMOVE AND REPLACE FACE
BRICK WITH NARROW CAVITY
DRAINAGE PLANE SYSTEM

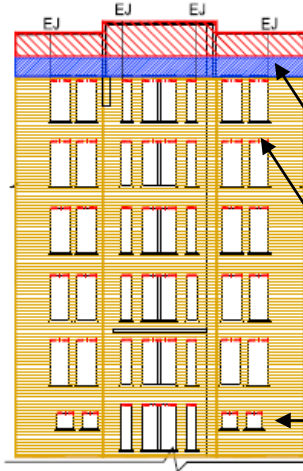
SCRAPE AND PAINT LINTEL



WEST COURT ELEVATION



NORTH COURT ELEVATION



REMOVE PARAPET AND
RECONSTRUCTION OF ITS
ORIGINAL DESIGN

REMOVE AND REPLACE FACE
BRICK WITH NARROW CAVITY
DRAINAGE PLANE SYSTEM

SCRAPE AND PAINT LINTEL

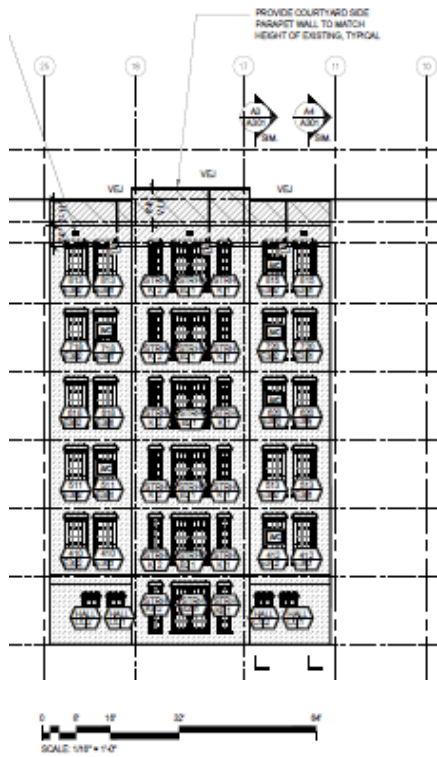
REPOINT AND CLEAN
MASONRY (20% INDIVIDUAL
BRICK REPLACEMENT)



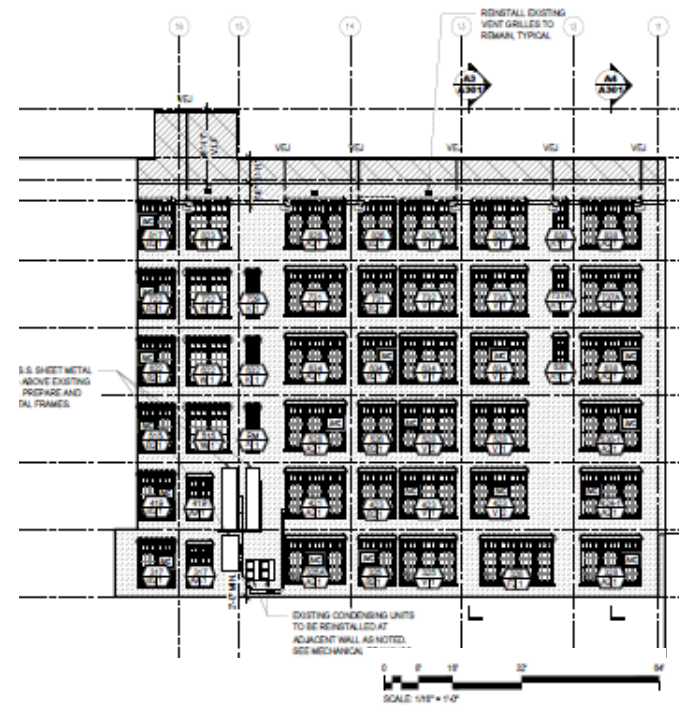
WEST COURT ELEVATION



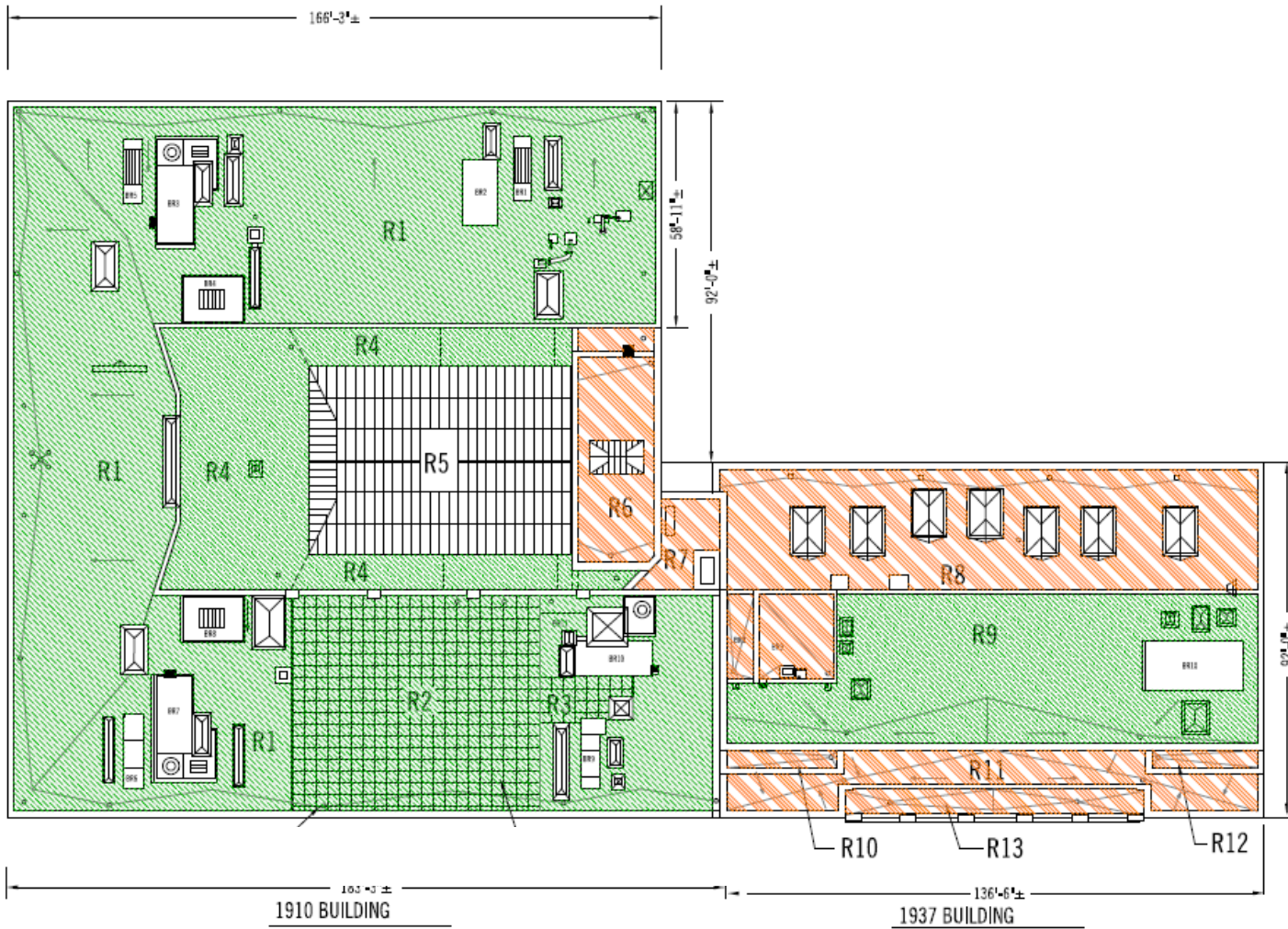
NORTH COURT ELEVATION



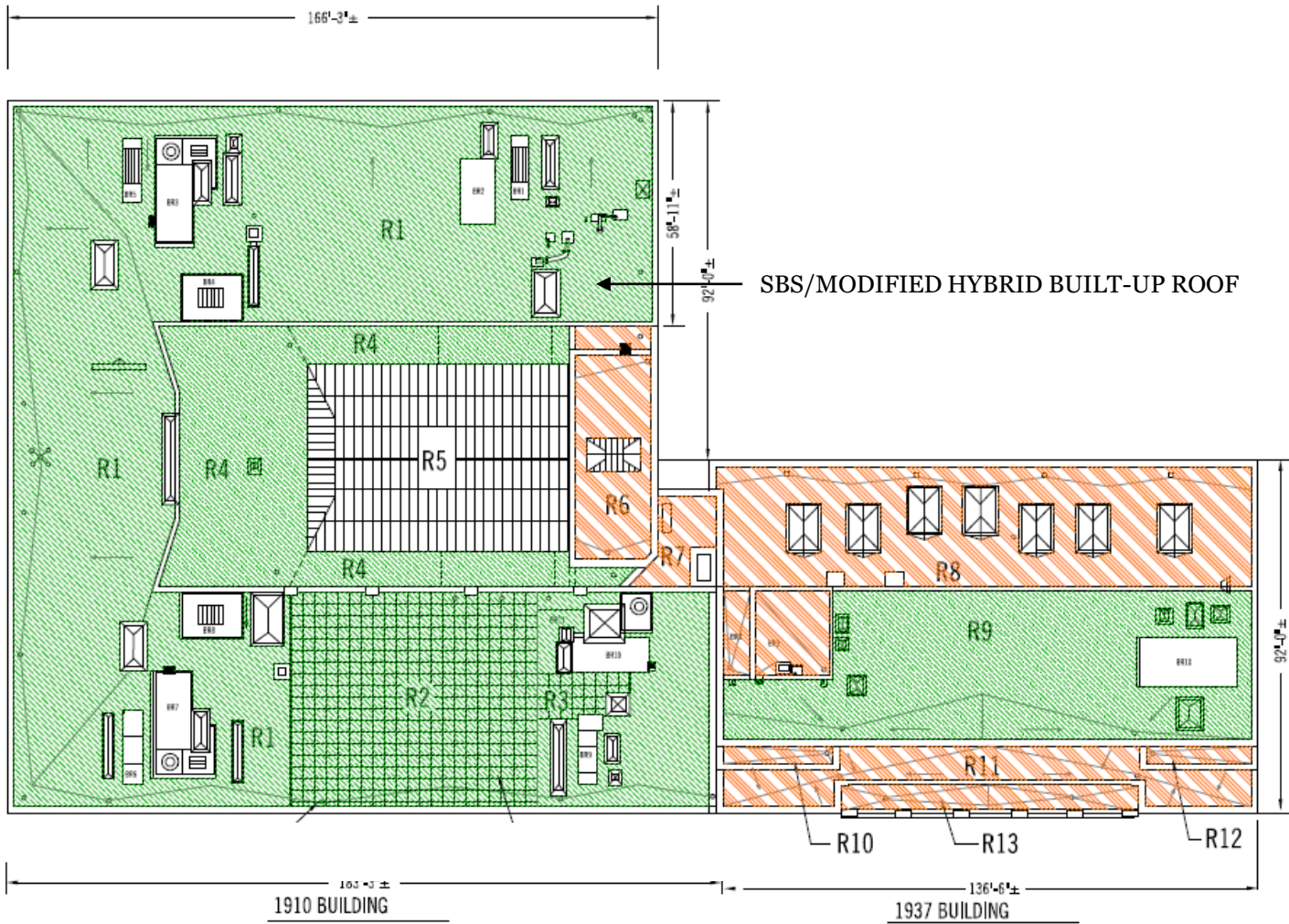
WEST COURT ELEVATION



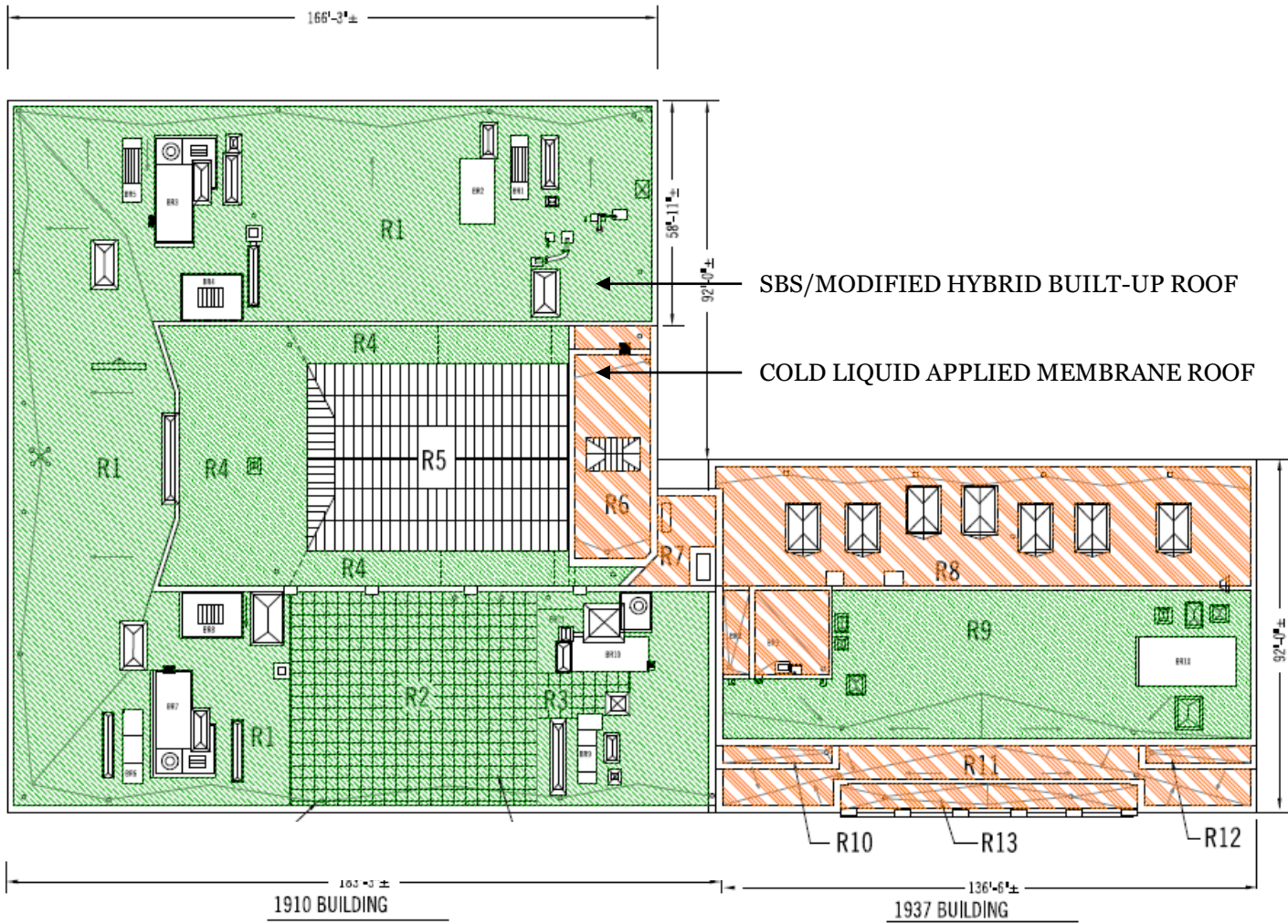
NORTH COURT ELEVATION



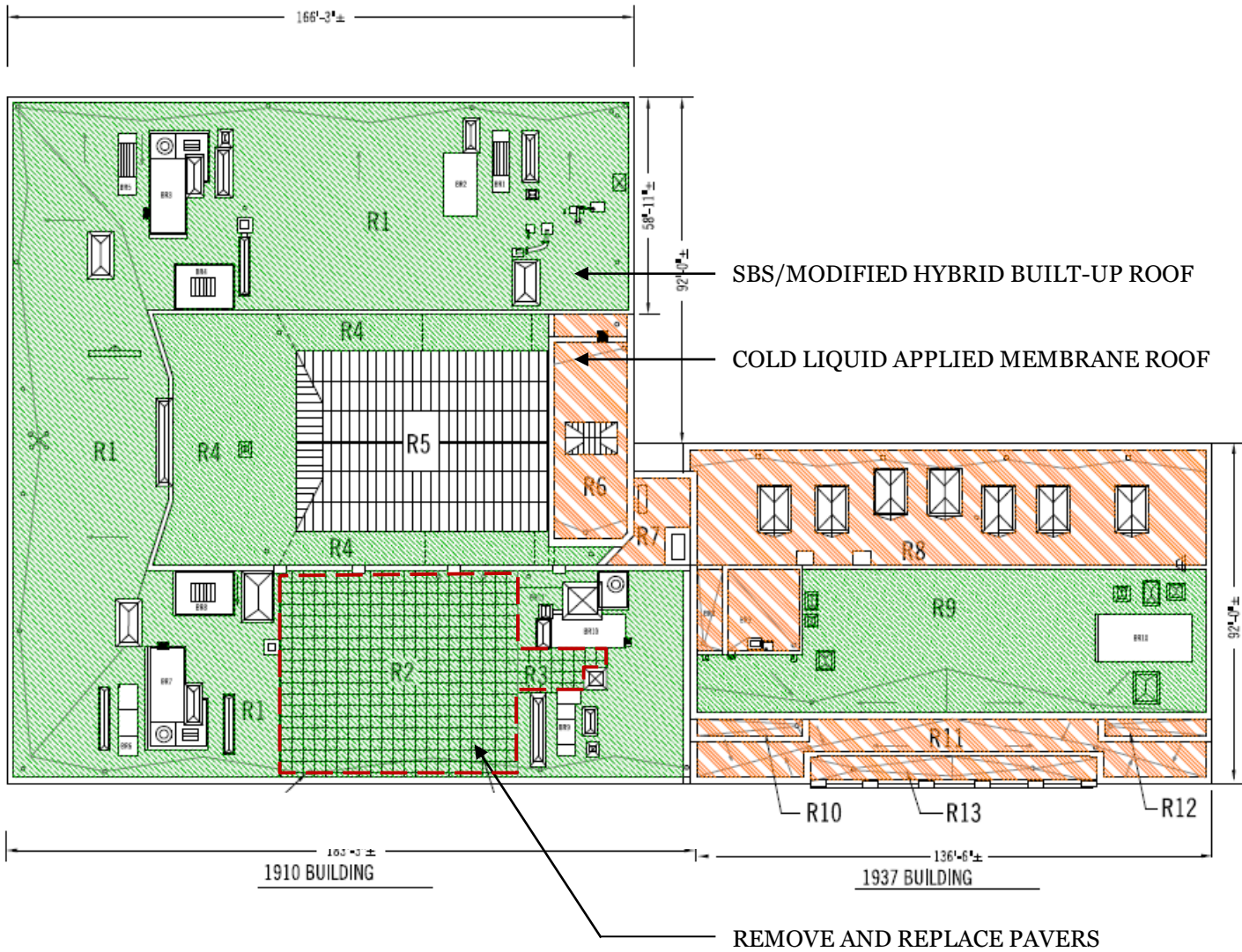
ROOF PLAN



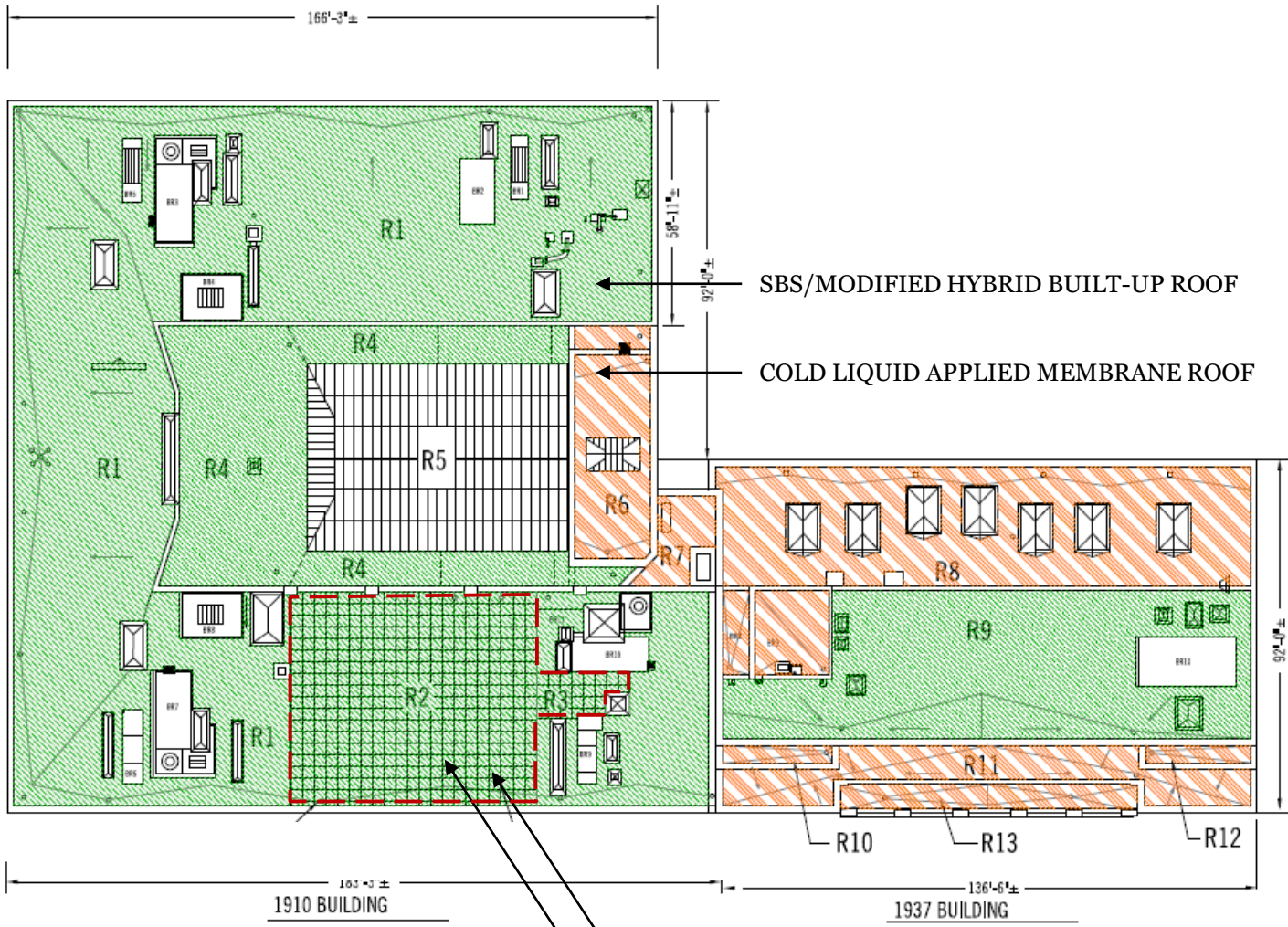
ROOF PLAN



ROOF PLAN



ROOF PLAN



SBS/MODIFIED HYBRID BUILT-UP ROOF

COLD LIQUID APPLIED MEMBRANE ROOF

REMOVE AND REPLACE PAVERS

REMOVE AND REINSTALL PLAYGROUND ROOF ASSEMBLY

ROOF PLAN

Recommended Interior Work

- Repair interior plaster at ceiling and walls, where damage has occurred;
- Paint interior ceiling and walls, where damage has occurred;
- Remove and replace VCT and wood flooring where damage has occurred;
- Remove and replace brick at exterior walls in gymnasium to include new waterproof membrane (along the elevator pit and the wall between the gymnasium and storage room);
- Provide grout injection at walls and ceilings at select rooms in cellar;

2. Project timeline

12/12/2016 Notice to Proceed is issued to Contractor

12/11/2019 Projected Date of Substantial completion

03/10/2020 Projected Date of Final completion

3. Questions and answers

END