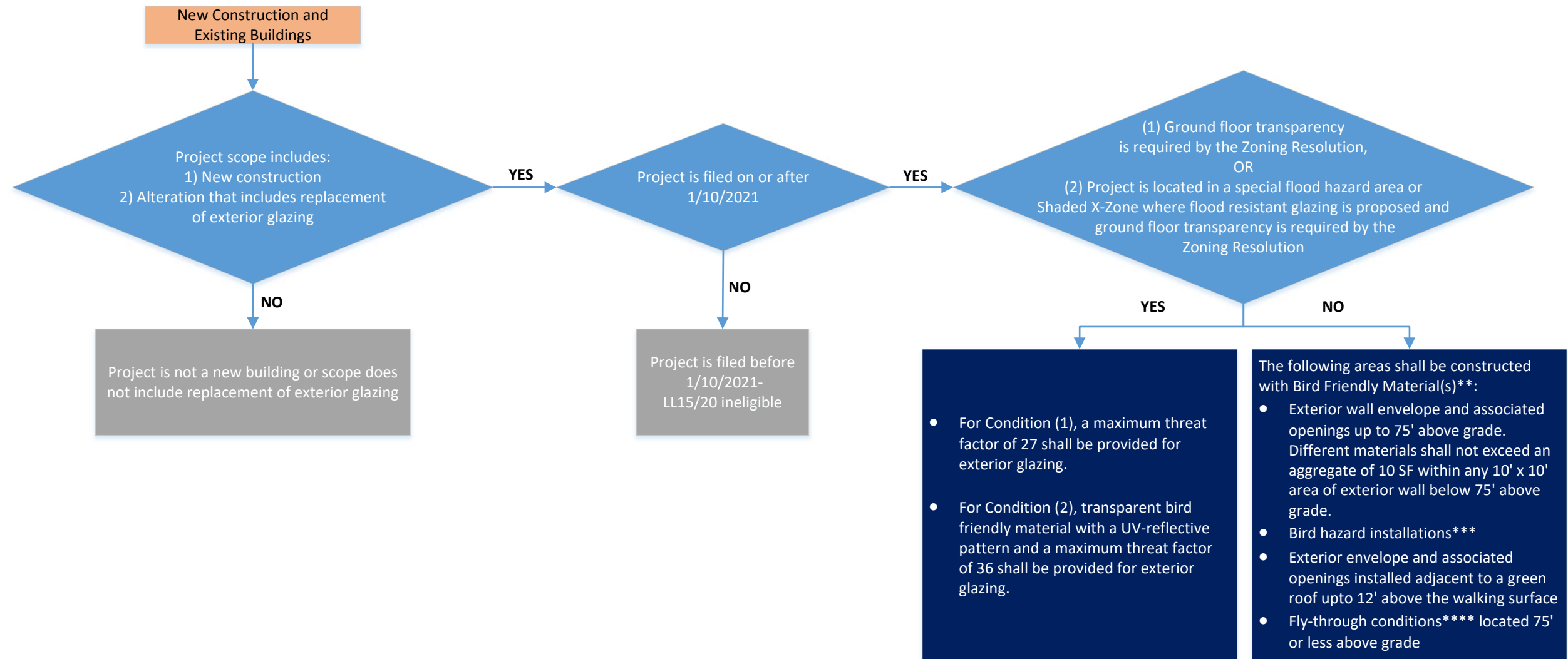


**BIRD FRIENDLY MATERIALS  
LOCAL LAW 15/2020 CRITERIA &  
REQUIREMENTS\***

**EFFECTIVE DATE: 1/10/2021**



**CRITERIA FOR  
LL15/20**

**CRITERIA  
INELIGIBLE FOR  
LL15/20**

**REQUIREMENT**

\*In accordance with the rules of the NYC Department of Buildings  
 \*\*Bird Friendly Material- A material or assembly that has a maximum threat factor of 25.  
 \*\*\*Bird Hazard Installations- Monolithic glazing installations that provide a clear line of sight on the exterior of buildings, including, but not limited to, glass awnings, glass handrails and guards, glass wind break panels, or glass acoustic barriers.  
 \*\*\*\*Fly-Through Conditions- One or more panels of glass that provide a clear line of sight through such elements creating the illusion of a void leading to the other side, including parallel glass elements, at a distance of 17 feet or less, or a convergence of glass sides creating a perpendicular, acute or obtuse corner.